

ON Semiconductor **AMI Semiconductor / ON**

FSGM0765RUDTU

Part Number:	FSGM0765RUDTU
Manufacturer/Brand:	AMI Semiconductor / ON Semiconductor
Product description:	IC PWM/SENSEFET SMPS TO-220F-6U
Datasheets:	FSGM0765RUDTU.pdf
RoHS Status:	Lead free / RoHS Compliant
Stock Condition:	45552 pcs stock
Ship From:	Hong Kong
Shipment Way:	DHL/Fedex/TNT/UPS/EMS

Semiconductor

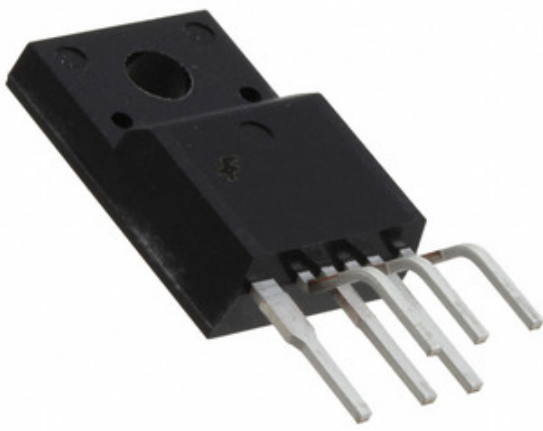


Image may be representation. See specifications for product details.

REQUEST FOR QUOTATION

Specifications of FSGM0765RUDTU

PART NUMBER	FSGM0765RUDTU
MANUFACTURER	AMI Semiconductor / ON Semiconductor
DESCRIPTION	IC PWM/SENSEFET SMPS TO-220F-6U
LEAD FREE STATUS / ROHS STATUS	Lead free / RoHS Compliant
QUANTITY AVAILABLE	45552 pcs
DATA SHEET	FSGM0765RUDTU.pdf
VOLTAGE - SUPPLY (VCC/VDD)	7.5 V ~ 26 V
VOLTAGE - START UP	12V
VOLTAGE - BREAKDOWN	650V
TOPOLOGY	Flyback
SUPPLIER DEVICE PACKAGE	TO-220F-6L (U-Forming)
SERIES	FPS™
POWER (WATTS)	90W
PACKAGING	Tube
PACKAGE / CASE	TO-220-6 Full Pack, Formed Leads
OUTPUT ISOLATION	Isolated
OPERATING TEMPERATURE	-40°C ~ 125°C (TJ)
MOUNTING TYPE	Surface Mount
MOISTURE SENSITIVITY LEVEL (MSL)	1 (Unlimited)
LEAD FREE STATUS / ROHS STATUS	Lead free / RoHS Compliant
INTERNAL SWITCH(S)	Yes
FREQUENCY - SWITCHING	66kHz
FAULT PROTECTION	Current Limiting, Over Load, Over Temperature, Over Voltage, Short Circuit
DUTY CYCLE	70%
DETAILED DESCRIPTION	Converter Offline Flyback Topology 66kHz TO-220F-6L (U-Forming)
CONTROL FEATURES	-
BASE PART NUMBER	FSGM0765R

Related Tags

AMI Semiconductor / ON Semiconductor FSGM0765RUDTU	FSGM0765RUDTU Distributor	FSGM0765RUDTU Supplier
FSGM0765RUDTU Price	FSGM0765RUDTU Pictures	FSGM0765RUDTU Image
FSGM0765RUDTU PDF Datasheet	FSGM0765RUDTU Download Datasheet	FSGM0765RUDTU Datasheet
FSGM0765RUDTU Stock	Buy FSGM0765RUDTU	Buy AMI Semiconductor / ON Semiconductor FSGM0765RUDTU
AMI Semiconductor / ON Semiconductor FSGM0765RUDTU	AMI Semiconductor / ON Semiconductor Supplier	AMI Semiconductor / ON Semiconductor Distributor
AMI Semiconductor / ON Semiconductor FSGM0765RUDTU	ON Semiconductor FSGM0765RUDTU	Aptina / ON Semiconductor FSGM0765RUDTU
Catalyst Semiconductor / ON Semiconductor FSGM0765RUDTU	PulseCore Semiconductor / ON Semiconductor FSGM0765RUDTU	Sanyo Semiconductor / ON Semiconductor FSGM0765RUDTU

Related Products

<p>FSGM0565RLDTU Manufacturers: AMI Semiconductor / ON Semiconductor Description: IC PWM/SENSEFET SMPS TO-220F-6L In stock: 45079 pcs RFQ</p>	<p>FSGM300N Manufacturers: AMI Semiconductor / ON Semiconductor Description: IC PWM/SENSEFET SMPS 8-DIP In stock: 174053 pcs RFQ</p>
<p>FSGM0765RWDTU Manufacturers: AMI Semiconductor / ON Semiconductor Description: IC PWM/SENSEFET SMPS TO-220F-6W In stock: 46987 pcs RFQ</p>	<p>FSGM0565RWDTU Manufacturers: AMI Semiconductor / ON Semiconductor Description: IC PWM/SENSEFET SMPS TO-220F-6W In stock: 45255 pcs RFQ</p>
<p>FSGM0465RWDTU Manufacturers: AMI Semiconductor / ON Semiconductor Description: IC PWM/SENSEFET SMPS TO-220F-6W In stock: 45464 pcs RFQ</p>	<p>FSGM0565RBWDTU Manufacturers: AMI Semiconductor / ON Semiconductor Description: IC OFF-LINE SWITCH PWM TO220F-6 In stock: 53721 pcs RFQ</p>
<p>FSGM0765RLDTU Manufacturers: AMI Semiconductor / ON Semiconductor Description: IC PWM/SENSEFET SMPS TO-220F-6L In stock: 48927 pcs RFQ</p>	<p>FSGM0465RUDTU Manufacturers: AMI Semiconductor / ON Semiconductor Description: IC PWM/SENSEFET SMPS TO-220F-6U In stock: 6737 pcs RFQ</p>
<p>FSGM0565RBLDTU Manufacturers: AMI Semiconductor / ON Semiconductor Description: IC OFF-LINE SWITCH PWM TO220F-6 In stock: 52161 pcs RFQ</p>	<p>FSGM0565RBDTU Manufacturers: AMI Semiconductor / ON Semiconductor Description: IC OFF-LINE SWITCH PWM TO220F-6 In stock: 6690 pcs RFQ</p>
<p>FSGM0565RUDTU Manufacturers: AMI Semiconductor / ON Semiconductor Description: IC PWM/SENSEFET SMPS TO-220F-6U In stock: 40271 pcs RFQ</p>	<p>FSGM0465RLDTU Manufacturers: AMI Semiconductor / ON Semiconductor Description: IC PWM/SENSEFET SMPS TO-220F-6L In stock: 5825 pcs RFQ</p>