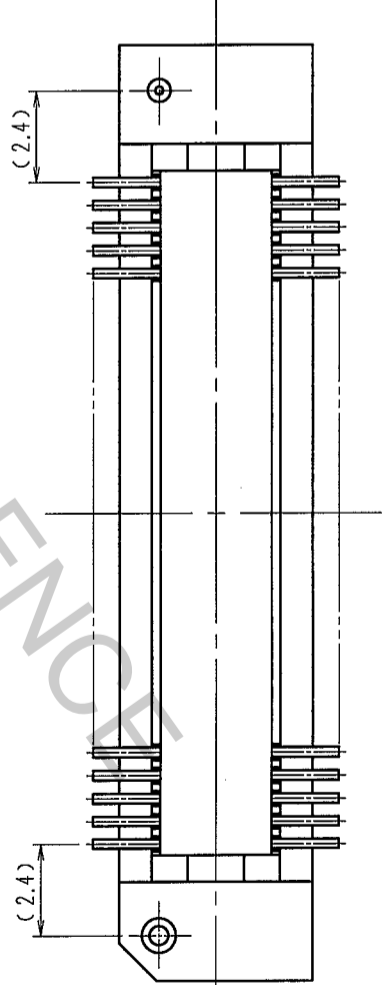
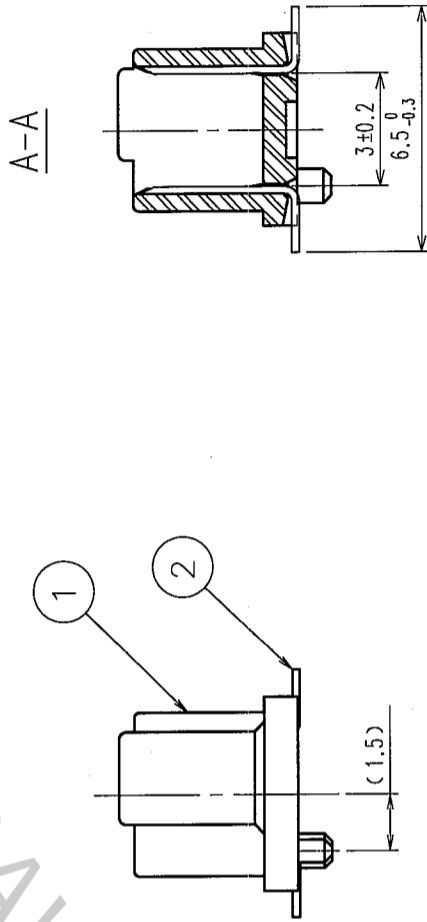
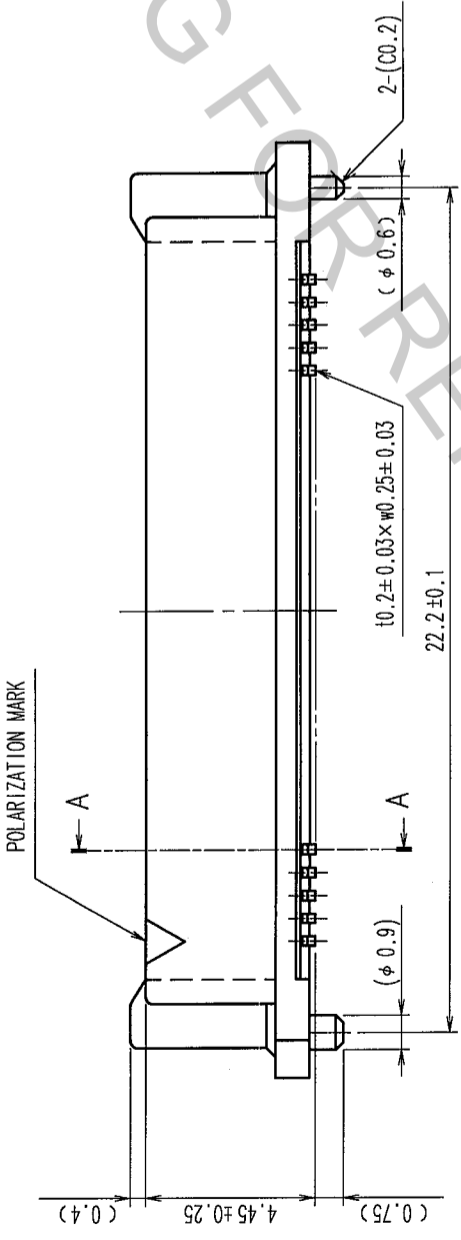
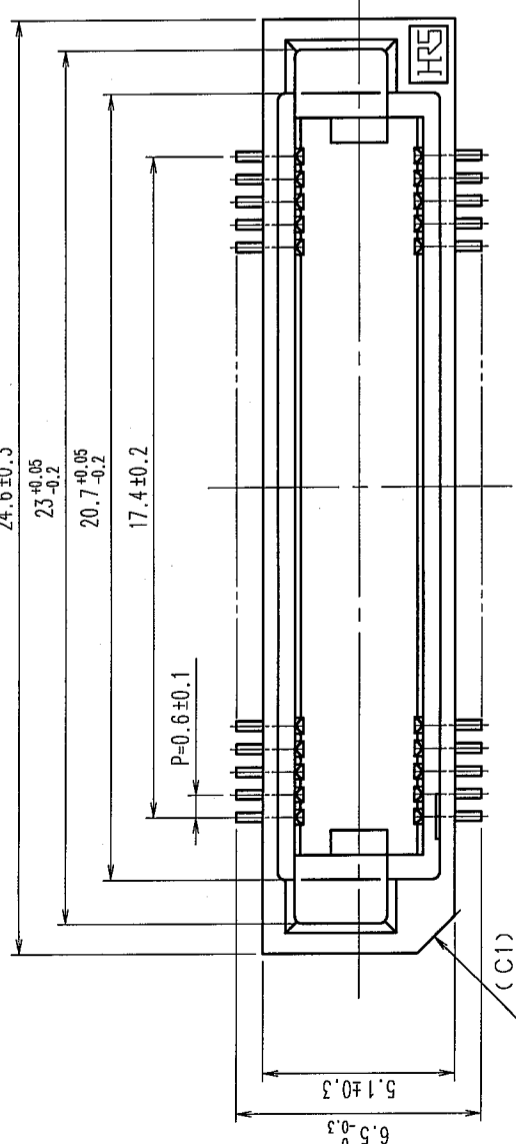
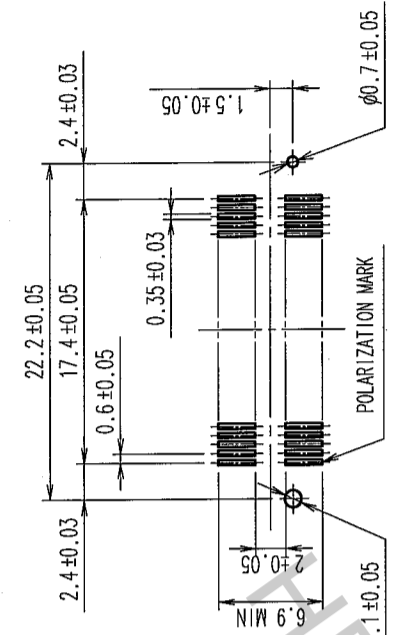


COUNT	DESCRIPTION OF REVISIONS	BY	CHKD	DATE	COUNT	DESCRIPTION OF REVISIONS	BY	CHKD	DATE
△					△				
△					△				
△					△				

RECOMMENDED LAND PATTERN DIMENSION OF PCB (MOUNTING SIDE) (2:1)

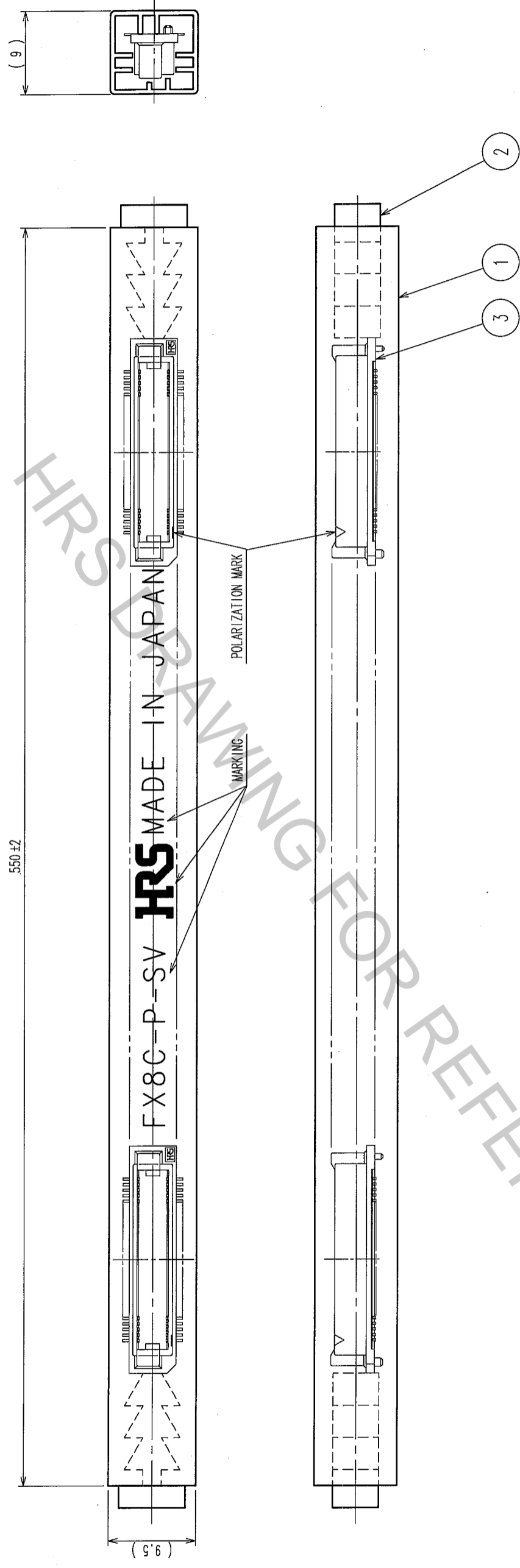


NOTE. 1. LEAD CO-PLANARITY SHALL BE 0.1mm MAX.
 2. TUBE PACKAGING SHALL BE APPLIED FOR THIS PRODUCT.
 SEE NEXT PAGE FOR DETAILS.
 3. FOR MODIFICATION, ETC., PREVENTIVE HOLE FOR SINK MARK MAY BE ADDED ACCORDING TO CIRCUMSTANCES.
 4. THE DIMENSIONS IN PARENTHESES ARE FOR REFERENCE.

1	PPS	LIGHT BROWN (UL94V-0)	2	PHOSPHOR BRONZE	CONTACT AREA: GOLD 0.1μm min. LEAD AREA: GOLD FLASH
NO.	MATERIAL	FINISH, REMARKS	NO.	MATERIAL	FINISH, REMARKS
CODE NO. (COLD) CL			DESIGNED K. NAKAMURA	CHECKED K. Ogawa	APPROVED H. Okawa
			DRAWN 05.12.09	DESIGNED 05.12.09	APPROVED '05.12.12
DRAWING NO. EDC3-150821-21			PART NO. FX8C-60P-SV(91)		
SCALE 5:1			CODE NO. CL578-0501-9-91		
UNITS mm			FORM NO. 229		

TO	
PCK	

COUNT	DESCRIPTION OF REVISIONS	BY	CHKD	DATE	COUNT	DESCRIPTION OF REVISIONS	BY	CHKD	DATE
△					△				
△					△				
△					△				



NOTE 1. 1 TUBE : 21 CONNECTORS.
 2. THE DIMENSIONS IN PARENTHESES ARE FOR REFERENCE.

2 POLYVINYL CHLORIDE (STOPPER)		3 (CONNECTOR)			
NO.	MATERIAL	FINISH, REMARKS	NO.	MATERIAL	FINISH, REMARKS
1	POLYVINYL CHLORIDE	(TUBE)	1	POLYVINYL CHLORIDE	(CONNECTOR)
CODE NO. (OLD)		DRAWN		DESIGNED	
CL		K. NAKAMURA		K. NAKAMURA	
		05.12.09		05.12.09	
		05.12.12		05.12.12	
		H. Okawa		H. Okawa	
		05.12.12		05.12.12	
DRAWING NO.		PART NO.		RELEASED	
EDC3-150821-21		FX8C-60P-SV (91)			
SCALE		CODE NO.		2	
FREE		CL578-0501-9-91			
UNITS		HIROSE ELECTRIC CO., LTD			
mm					

TO	
PCK	