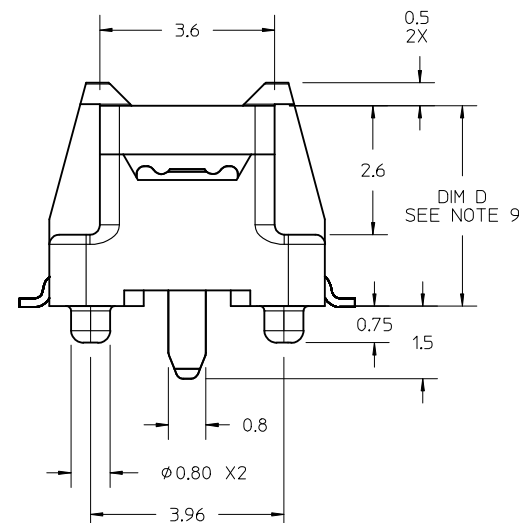
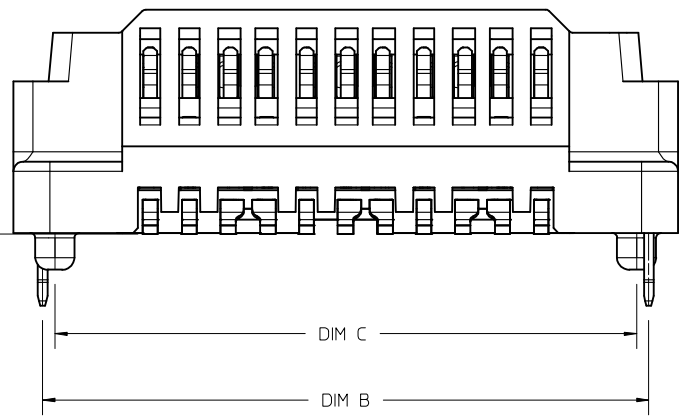
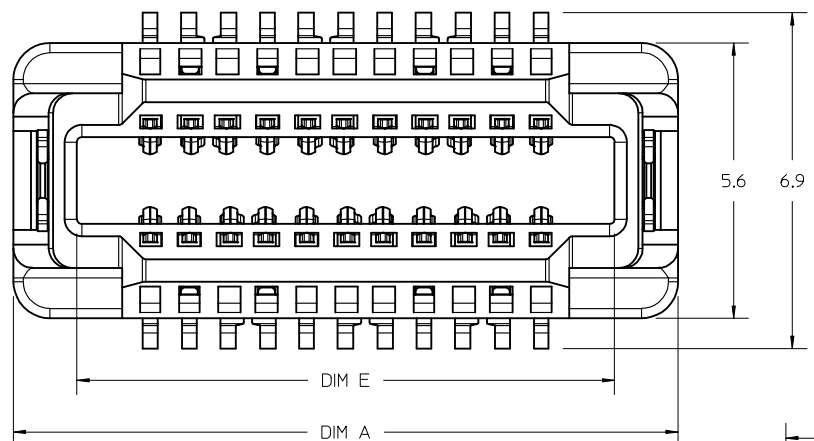


10	9	8	7	6	5	4	3	2	1
PART NUMBER	CKT SIZE	DIFF PAIRS	SPARE CKTS	DIM A	DIM B	DIM C	DIM E	DIM D	
171450-3102	22	6	2	13.6	12.40	11.90	11.0	4.10	
171450-3106	60	16	8	28.8	27.60	27.10	26.2	4.10	
171450-3114	82	22	10	41.6	40.40	39.90	11.0/ 26.2	4.10	



- NOTES:
1. MATERIALS: HOUSING: LCP, UL94V-0, BLACK
CONTACTS: HIGH PERFORMANCE COPPER ALLOY
 2. FINISH: 0.76 μ m MIN SELECT GOLD IN CONTACT AREA,
SELECT MATTE TIN IN TAIL AREA, OVERALL NICKEL.
 3. PRODUCT SPECIFICATION: PS-171446-0001
 4. PACKAGING SPECIFICATION: PK-70873-6002
 5. MATES WITH SPEEDSTACK PLUGS: 171446 & 171810
 6. APPLICATION SPECIFICATION: AS-171450-9999
 7. COSMETIC SPECIFICATION: PS-45499-002 CLASS B
 8. PART STATUS: CONTACT MOLEX
 9. DIM D ON THIS DRAWING PLUS DIM D ON DRAWING # SD-171446-1000
EQUALS THE SYSTEM MATED STACK HEIGHT
 10. PARTS SHIPPED WITH PICK AND PLACE COVERS.

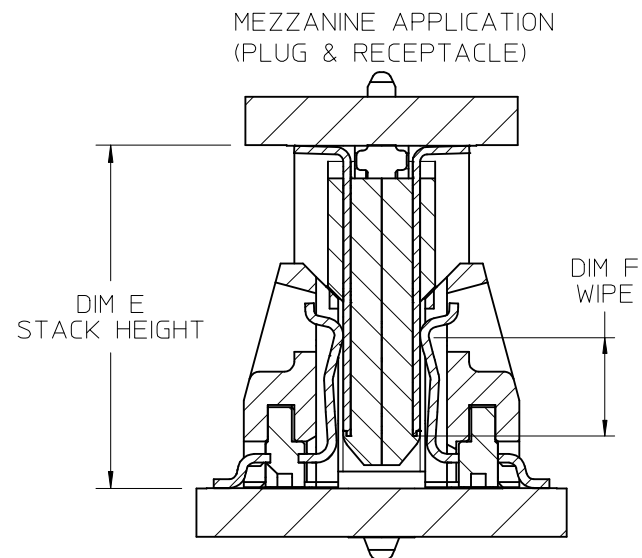
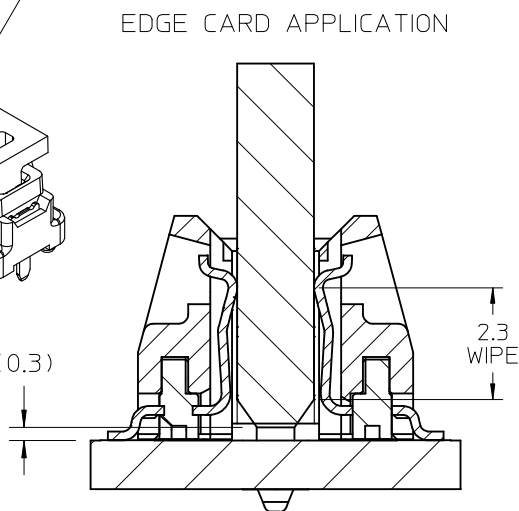
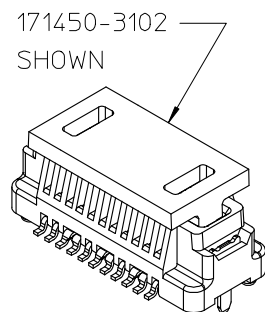
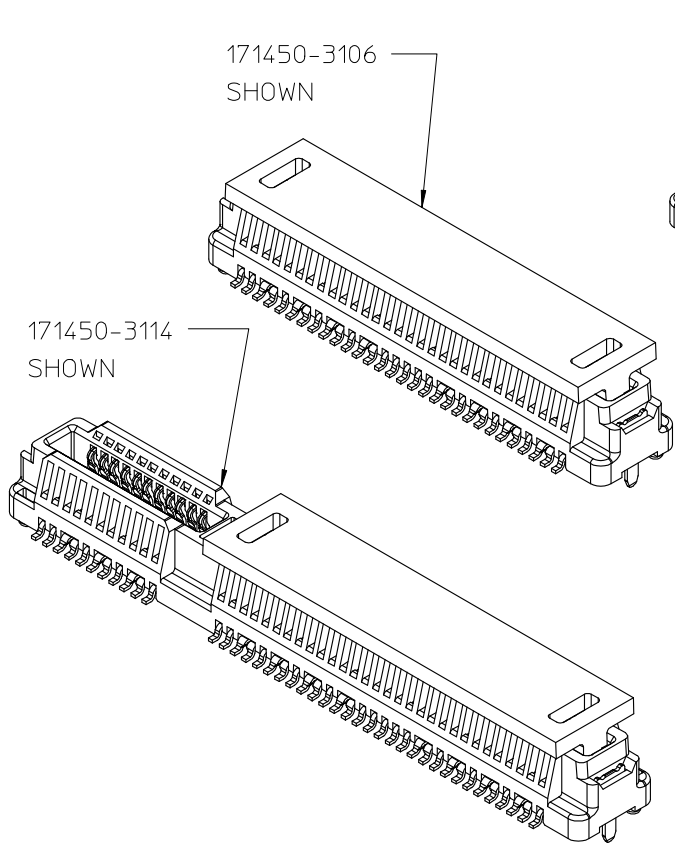
UPDATE EDGE CARD EC NO: UCP2015-5331 DRWN: JB INGHAM 2015/08/24 CHKD: DMC GOWAN 2015/08/24 APPR: DMC GOWAN 2015/09/18	QUALITY SYMBOLS $\nabla = 0$ $\nabla = 0$ $\nabla = 0$	GENERAL TOLERANCES (UNLESS SPECIFIED)		DIMENSION STYLE MM ONLY		SCALE 10:1	DESIGN UNITS METRIC	THIRD ANGLE PROJECTION		
			mm	INCH	DRAWN BY JB INGHAM	DATE 2014/11/11	TITLE SPEEDSTACK RECEPTACLE ASSEMBLY SALES DRAWING 			
		4 PLACES	± ---	± ---	CHECKED BY DMC GOWAN	DATE 2014/11/11				
		3 PLACES	± ---	± ---	APPROVED BY DMC GOWAN	DATE 2015/01/26	MATERIAL NO.	DOCUMENT NO. SD-171450-3000	SHEET NO. 1 OF 8	

ANGULAR $\pm 1/2^\circ$
DRAFT WHERE APPLICABLE
MUST REMAIN WITHIN DIMENSIONS

SIZE B | **SEE CHART** | THIS DRAWING CONTAINS INFORMATION THAT IS PROPRIETARY TO MOLEX INCORPORATED AND SHOULD NOT BE USED WITHOUT WRITTEN PERMISSION

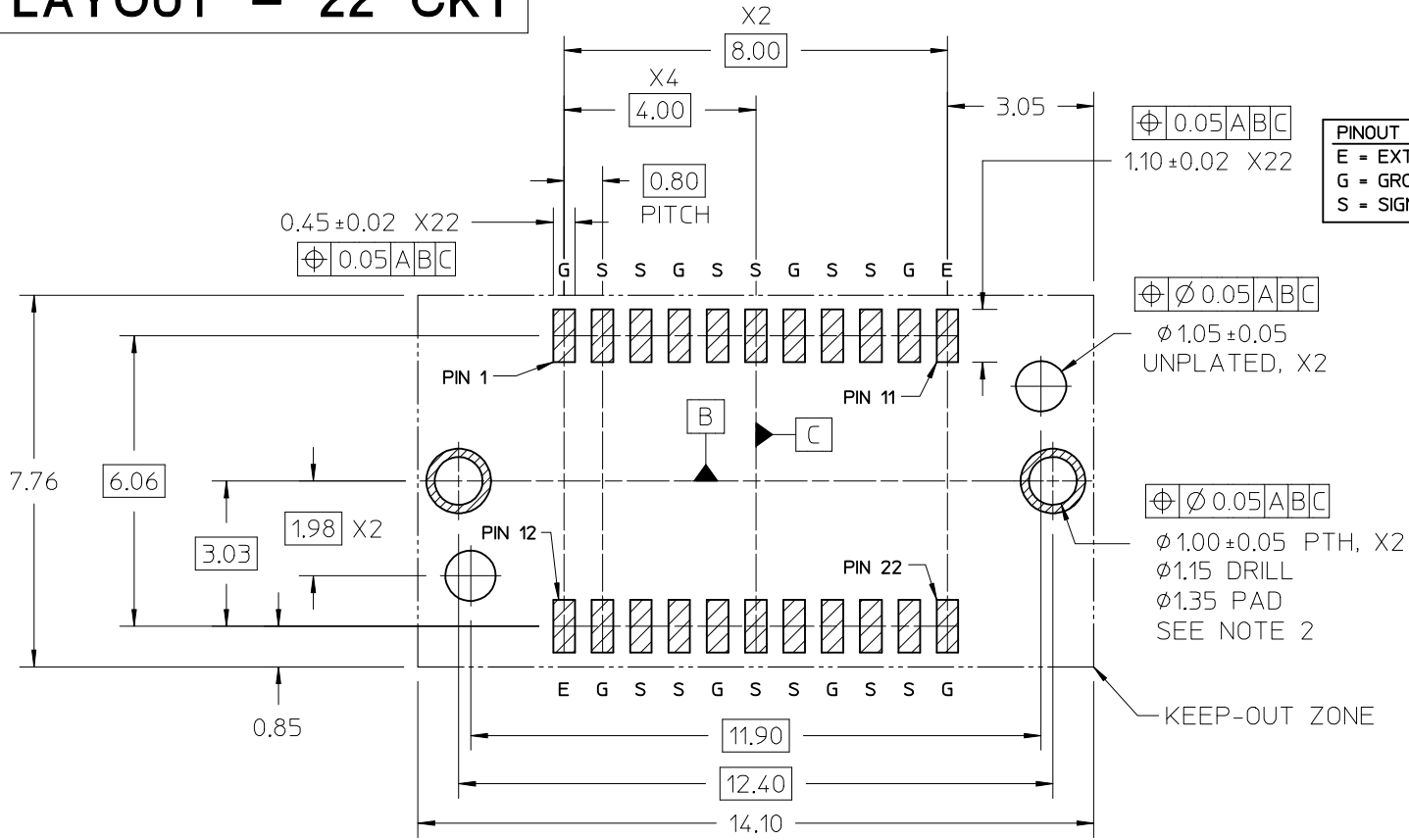
MEZZANINE (PLUG & RECEPTACLE) STACKING CHART

RECEPTACLE OPTIONS		PLUG OPTIONS (1mm WIPE)				PLUG OPTIONS (2mm WIPE)				
		HEIGHT	1mm	2mm	3mm	4mm	1mm	2mm	3mm	4mm
		22 CKT	171446-1101	171446-1102	171446-1103	171446-1104	171446-1105	171446-1106	171446-1107	171446-1108
60 CKT	171446-1109	171446-1110	171446-1111	171446-1112	171446-1113	171446-1114	171446-1115	171446-1116		
22 CKT	171450-3102	4mm	5/1	6/1	7/1	8/1	5/2	6/2	7/2	8/2
60 CKT	171450-3106									
82 CKT	171450-3114									
CIRCUITS	MOLEX P/N	HEIGHT	STACK HEIGHT (DIM E)/WIPE (DIM F)							



SEE SHEET 1 EC NO: UCP2015-5331 DRWN: JBINGHAM 2015/08/24 CHKD: DMCGOWAN 2015/08/24 APPR: DMCGOWAN 2015/09/18	QUALITY SYMBOLS ▽/0 ▽/0 ▽/0	GENERAL TOLERANCES (UNLESS SPECIFIED) <table border="1"> <thead> <tr> <th></th> <th>mm</th> <th>INCH</th> </tr> </thead> <tbody> <tr> <td>4 PLACES</td> <td>±---</td> <td>±---</td> </tr> <tr> <td>3 PLACES</td> <td>±---</td> <td>±---</td> </tr> <tr> <td>2 PLACES</td> <td>±0.13</td> <td>±---</td> </tr> <tr> <td>1 PLACE</td> <td>±0.25</td> <td>±---</td> </tr> <tr> <td>0 PLACE</td> <td>±---</td> <td>±---</td> </tr> </tbody> </table>		mm	INCH	4 PLACES	±---	±---	3 PLACES	±---	±---	2 PLACES	±0.13	±---	1 PLACE	±0.25	±---	0 PLACE	±---	±---	DIMENSION STYLE MM ONLY	SCALE 10:1	DESIGN UNITS METRIC	THIRD ANGLE PROJECTION
		mm	INCH																					
	4 PLACES	±---	±---																					
	3 PLACES	±---	±---																					
2 PLACES	±0.13	±---																						
1 PLACE	±0.25	±---																						
0 PLACE	±---	±---																						
MATERIAL NO. SEE CHART	DOCUMENT NO. SD-171450-3000	SHEET NO. 2 OF 8																						
ANGULAR ±1/2° DRAFT WHERE APPLICABLE MUST REMAIN WITHIN DIMENSIONS			THIS DRAWING CONTAINS INFORMATION THAT IS PROPRIETARY TO MOLEX INCORPORATED AND SHOULD NOT BE USED WITHOUT WRITTEN PERMISSION																					

PCB LAYOUT - 22 CKT



PINOUT LEGEND
 E = EXTRA
 G = GROUND
 S = SIGNAL

PCB LAYOUT (COMPONENT SIDE)
 SOLDER PASTE THICKNESS: 0.15 MIN
 DATUM [A] IS THE BOTTOM SURFACE OF THE PCB

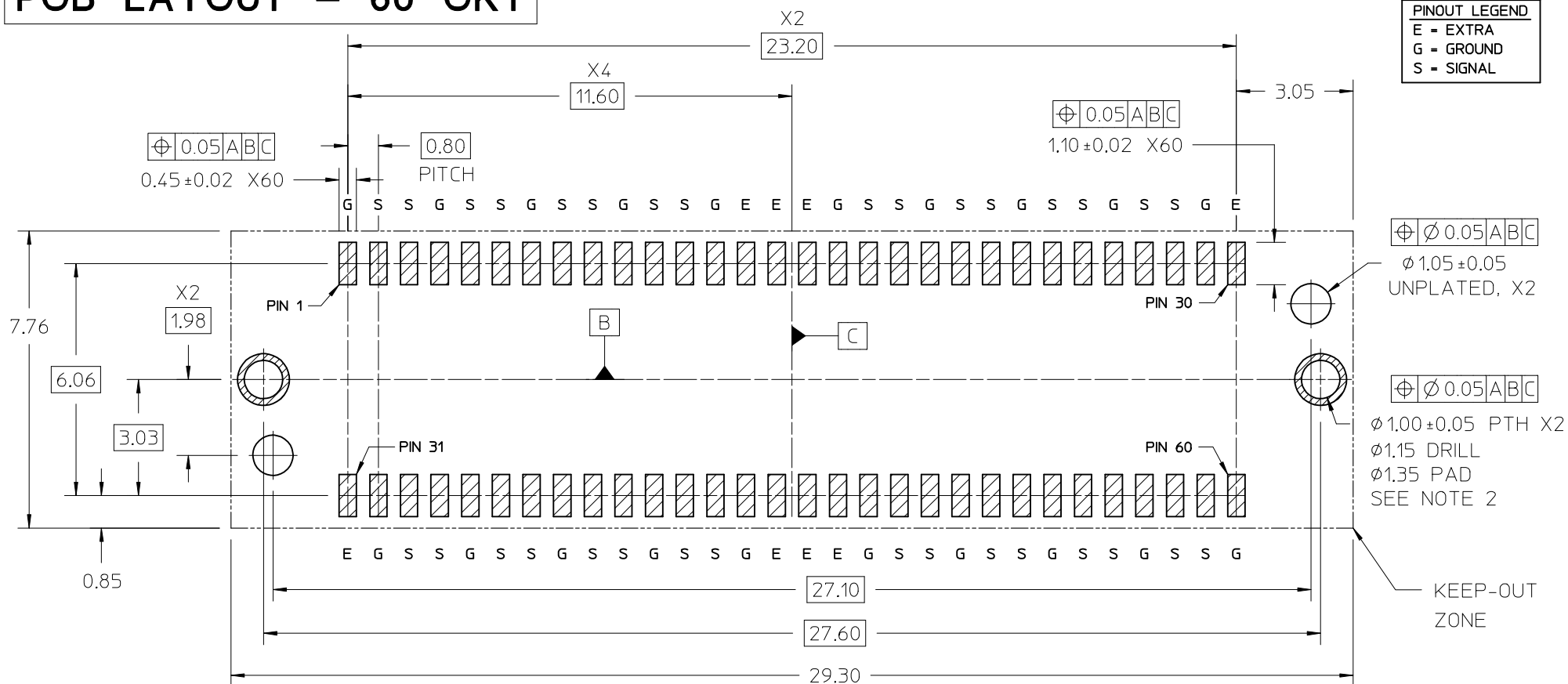
- NOTES:
- PIN NUMBERING IS FOR REFERENCE ONLY. OTHER PIN NUMBERS WILL NOT AFFECT THE OPERATION OF THE CONNECTOR.
 - RETENTION NAIL MUST BE SOLDERED ONTO THE PCB FOR PROPER CONNECTOR FUNCTION.

SEE SHEET 1 EC NO: UCP2015-5331 DRAWN: JBINGHAM 2015/08/24 CHKD: DMCGOWAN 2015/08/24 APPR: DMCGOWAN 2015/09/18	DESCRIPTION REV	QUALITY SYMBOLS	GENERAL TOLERANCES (UNLESS SPECIFIED)	DIMENSION STYLE	SCALE	DESIGN UNITS	THIRD ANGLE PROJECTION	
		$\nabla Z=0$ $\nabla Z=0$ $\nabla Z=0$	mm INCH 4 PLACES ± --- ± --- 3 PLACES ± --- ± --- 2 PLACES ± 0.13 ± --- 1 PLACE ± 0.25 ± --- 0 PLACE ± --- ± ---	MM ONLY	10:1	METRIC	DRAWN BY: JBINGHAM 2014/11/11 CHECKED BY: DMCGOWAN 2014/11/11 APPROVED BY: DMCGOWAN 2015/01/26	TITLE
		ANGULAR ±1/2° DRAFT WHERE APPLICABLE MUST REMAIN WITHIN DIMENSIONS	MATERIAL NO. SEE CHART	DOCUMENT NO. SD-171450-3000	SHEET NO. 3 OF 8			
		THIS DRAWING CONTAINS INFORMATION THAT IS PROPRIETARY TO MOLEX INCORPORATED AND SHOULD NOT BE USED WITHOUT WRITTEN PERMISSION						

SPEEDSTACK
 RECEPTACLE ASSEMBLY
 SALES DRAWING

molex

PCB LAYOUT - 60 CKT



PINOUT LEGEND	
E	= EXTRA
G	= GROUND
S	= SIGNAL

PCB LAYOUT (COMPONENT SIDE)

SOLDER PASTE THICKNESS: 0.15 MIN
 DATUM [A] IS THE BOTTOM SURFACE OF THE PCB

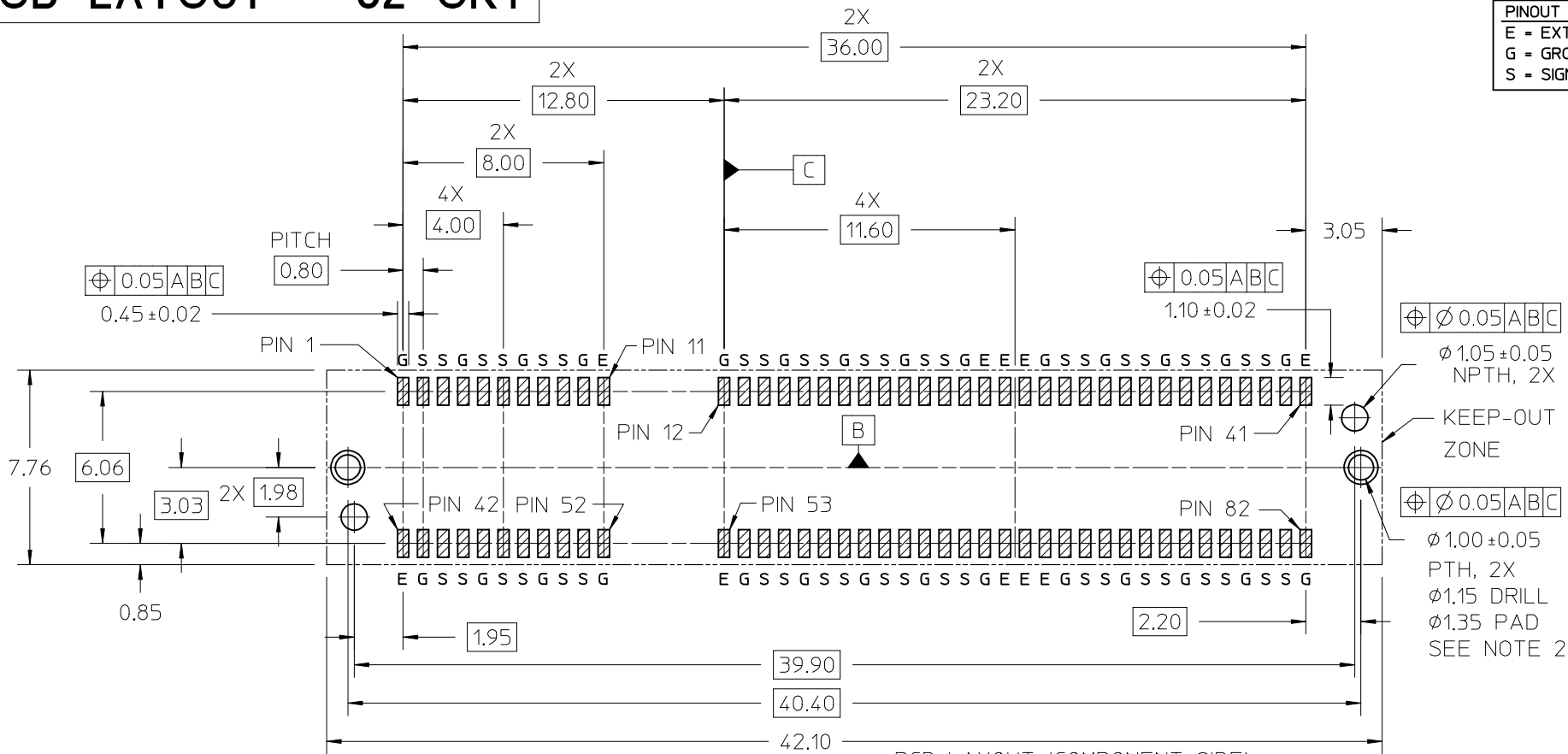
NOTES:

- PIN NUMBERING IS FOR REFERENCE ONLY. OTHER PIN NUMBERS WILL NOT AFFECT THE OPERATION OF THE CONNECTOR.
- RETENTION NAIL MUST BE SOLDERED ONTO THE PCB FOR PROPER CONNECTOR FUNCTION.

SEE SHEET 1 EC NO: UCP2015-5331 DRAWN: JBINGHAM 2015/08/24 CHKD: DMCGOWAN 2015/08/24 APPR: DMCGOWAN 2015/09/18	QUALITY SYMBOLS	GENERAL TOLERANCES (UNLESS SPECIFIED)	DIMENSION STYLE	SCALE	DESIGN UNITS	THIRD ANGLE PROJECTION
			MM ONLY	10:1	METRIC	
	▽=0	mm INCH	DRAWN BY DATE	TITLE	SPEEDSTACK RECEPTACLE ASSEMBLY SALES DRAWING molex	
	▽=0	4 PLACES ± --- ± ---	JBINGHAM 2014/11/11			
▽=0	3 PLACES ± --- ± ---	CHECKED BY DATE		DOCUMENT NO.	SHEET NO.	
▽=0	2 PLACES ± 0.13 ± ---	DMCGOWAN 2014/11/11		SD-171450-3000	4 OF 8	
	1 PLACE ± 0.25 ± ---	APPROVED BY DATE		THIS DRAWING CONTAINS INFORMATION THAT IS PROPRIETARY TO MOLEX INCORPORATED AND SHOULD NOT BE USED WITHOUT WRITTEN PERMISSION		
	0 PLACE ± --- ± ---	DMCGOWAN 2015/01/26				
		ANGULAR ± 1/2° DRAFT WHERE APPLICABLE MUST REMAIN WITHIN DIMENSIONS	SEE CHART			

PCB LAYOUT - 82 CKT

PINOUT LEGEND	
E	= EXTRA
G	= GROUND
S	= SIGNAL



PCB LAYOUT (COMPONENT SIDE)

SOLDER PASTE THICKNESS: 0.15 MIN
 DATUM [A] IS THE BOTTOM SURFACE OF THE PCB

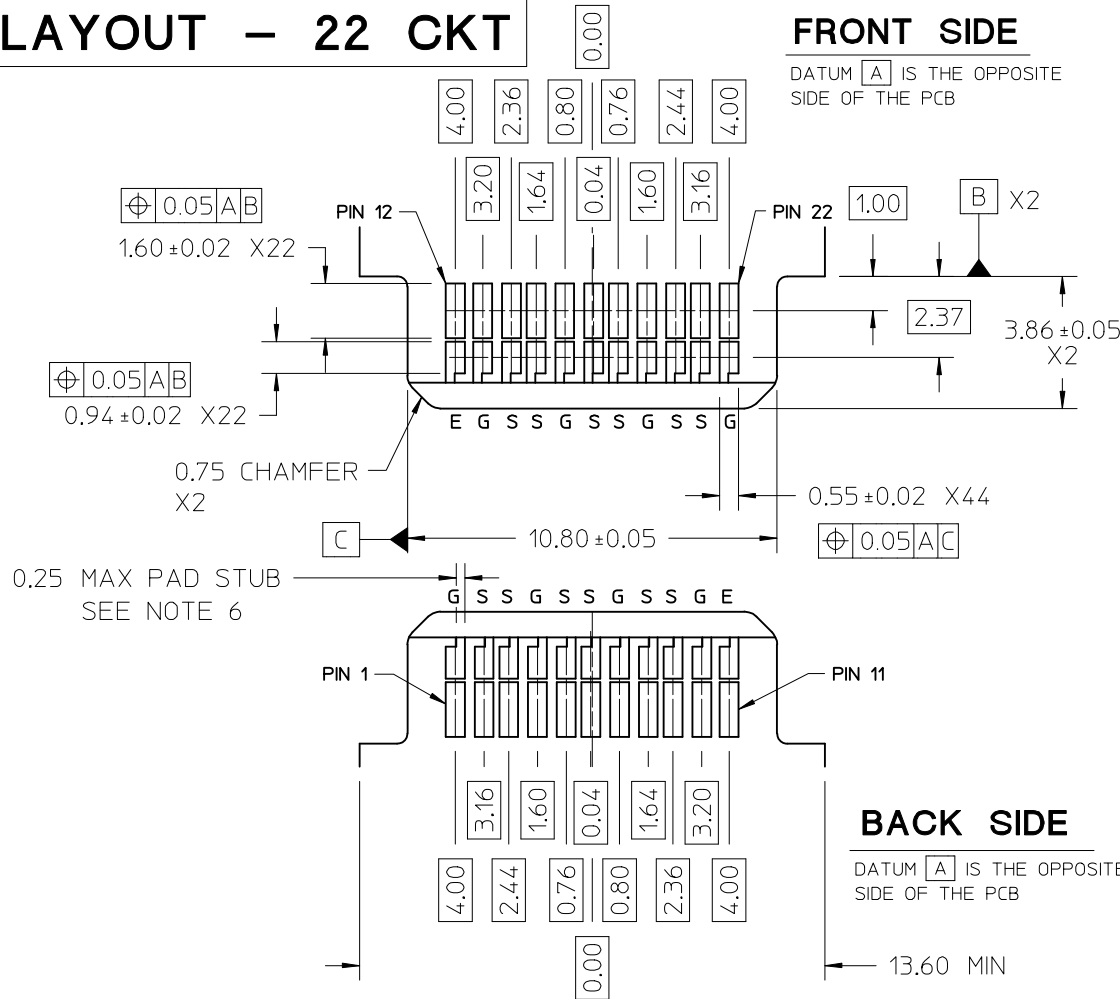
- NOTES:
- PIN NUMBERING IS FOR REFERENCE ONLY. OTHER PIN NUMBERS WILL NOT AFFECT THE OPERATION OF THE CONNECTOR.
 - RETENTION NAIL MUST BE SOLDERED ONTO THE PCB FOR PROPER CONNECTOR FUNCTION.

SEE SHEET 1 EC NO: UCP2015-5331 DRAWN: JBINGHAM 2015/08/24 CHKD: DMCGOWAN 2015/08/24 APPR: DMCGOWAN 2015/09/18	QUALITY SYMBOLS ▽=0 ▽=0 ▽=0	GENERAL TOLERANCES (UNLESS SPECIFIED)		DIMENSION STYLE MM ONLY		SCALE 6:1	DESIGN UNITS METRIC	THIRD ANGLE PROJECTION			
				mm	INCH	DRAWN BY JBINGHAM	DATE 2014/11/11	TITLE SPEEDSTACK RECEPTACLE ASSEMBLY SALES DRAWING molex			
				4 PLACES ± --- ± ---	3 PLACES ± --- ± ---	CHECKED BY DMCGOWAN	DATE 2014/11/11				
				2 PLACES ± 0.13 ± ---	1 PLACE ± 0.25 ± ---	APPROVED BY DMCGOWAN	DATE 2015/01/26	DOCUMENT NO. SD-171450-3000		SHEET NO. 5 OF 8	
		ANGULAR ± 1/2° DRAFT WHERE APPLICABLE MUST REMAIN WITHIN DIMENSIONS		MATERIAL NO. SEE CHART		THIS DRAWING CONTAINS INFORMATION THAT IS PROPRIETARY TO MOLEX INCORPORATED AND SHOULD NOT BE USED WITHOUT WRITTEN PERMISSION					

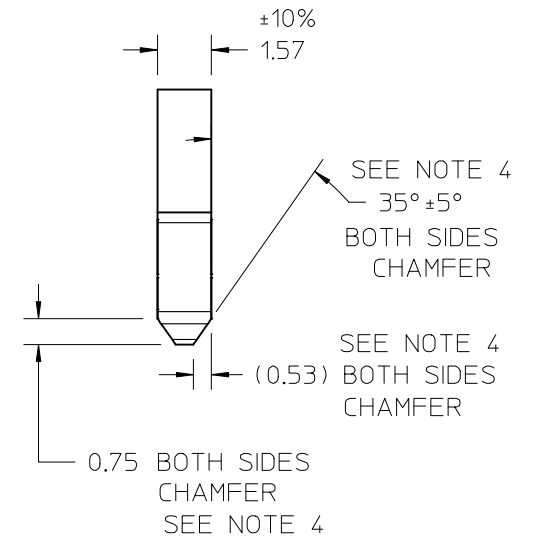
EDGECARD LAYOUT - 22 CKT

FRONT SIDE

DATUM **A** IS THE OPPOSITE SIDE OF THE PCB



OVER CONTACT PADS



BACK SIDE

DATUM **A** IS THE OPPOSITE SIDE OF THE PCB

PINOUT LEGEND

- E - EXTRA
- G - GROUND
- S - SIGNAL

NOTES:

1. PIN NUMBERING IS FOR REFERENCE ONLY. OTHER PIN NUMBERS WILL NOT AFFECT THE OPERATION OF THE CONNECTOR.
2. EDGE CARD SHOULDERS STOP ON RECEPTACLE SHOULDERS. EDGE CARD BOTTOM DOES NOT CONTACT RECEPTACLE PCB.
3. PAD SET BACK FROM CHAMFER ENOUGH TO ACCOMMODATE LARGEST CHAMFER WITHOUT DAMAGE TO PAD EDGE.
4. CHAMFER DEPTH SHOULD BE AS LARGE AS PRACTICAL TO ENSURE CORRECT MATING TO THE RECEPTACLE.
5. ALL CHAMFERED EDGES SHOULD BE ROUNDED WHERE POSSIBLE.
6. INTERNAL PLATING BRIDGES ARE PREFERRED TO ELIMINATE PAD STUB.

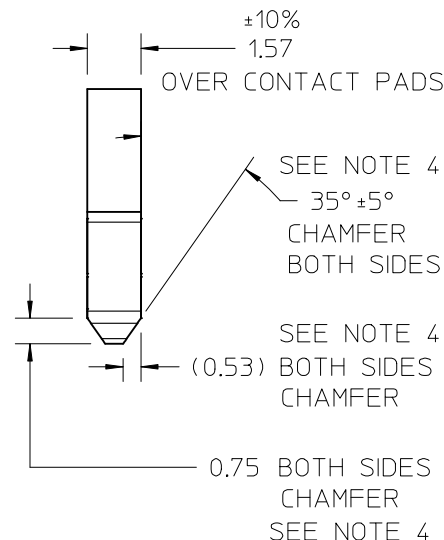
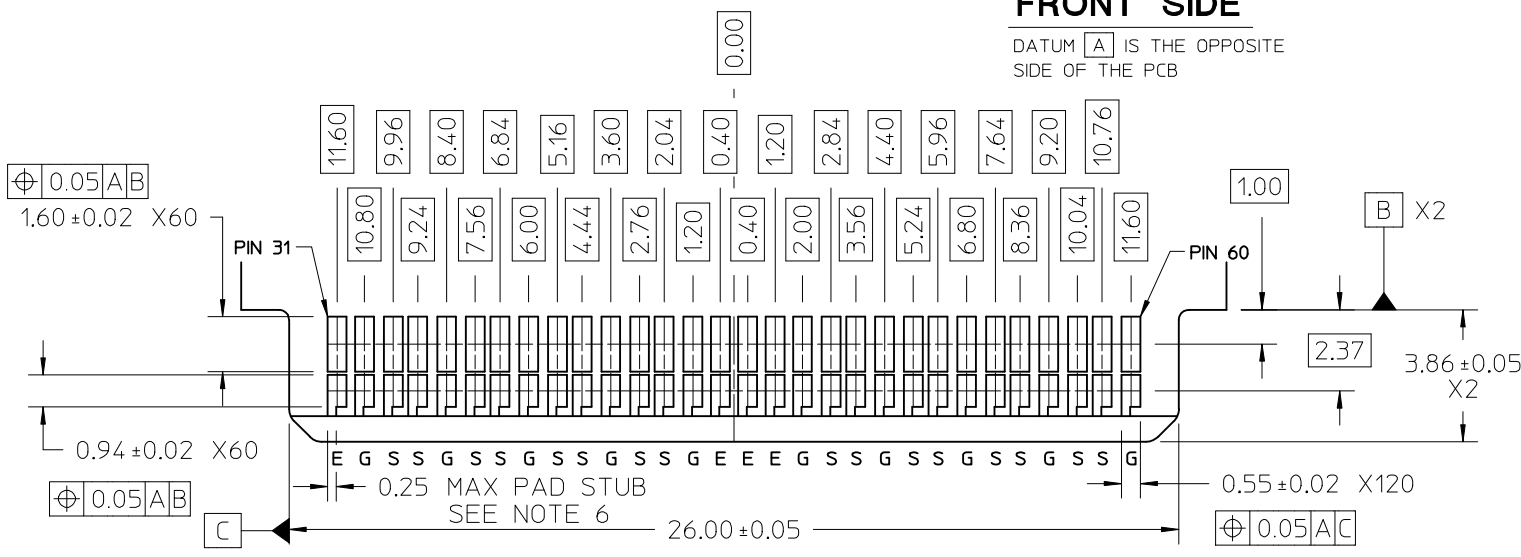
SEE SHEET 1 EC NO: UCP2015-5331 DRAWN: JBINGHAM 2015/08/24 CHKD: DMCGOWAN 2015/08/24 APPR: DMCGOWAN 2015/09/18	QUALITY SYMBOLS ▽=0 ▽=0 ▽=0	GENERAL TOLERANCES (UNLESS SPECIFIED)		DIMENSION STYLE		SCALE	DESIGN UNITS	THIRD ANGLE PROJECTION			
				MM ONLY		7:1	METRIC				
				mm	INCH	DRAWN BY	DATE	TITLE			
				4 PLACES ± --- ± ---	3 PLACES ± --- ± ---	2 PLACES ± 0.13 ± ---	1 PLACE ± 0.25 ± ---	0 PLACE ± --- ± ---	DRAWN BY		DATE
		ANGULAR ± 1/2°		MATERIAL NO.		DOCUMENT NO.		SHEET NO.			
		DRAFT WHERE APPLICABLE MUST REMAIN WITHIN DIMENSIONS		SEE CHART		SD-171450-3000		6 OF 8			
				SIZE B		THIS DRAWING CONTAINS INFORMATION THAT IS PROPRIETARY TO MOLEX INCORPORATED AND SHOULD NOT BE USED WITHOUT WRITTEN PERMISSION					

EDGE CARD LAYOUT - 60 CKT

PINOUT LEGEND	
E	= EXTRA
G	= GROUND
S	= SIGNAL

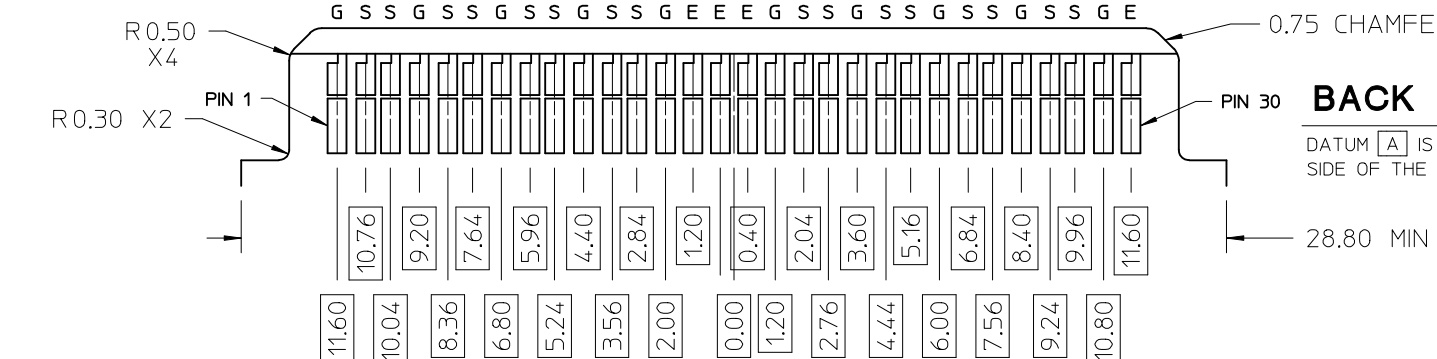
FRONT SIDE

DATUM [A] IS THE OPPOSITE SIDE OF THE PCB



BACK SIDE

DATUM [A] IS THE OPPOSITE SIDE OF THE PCB



NOTES:

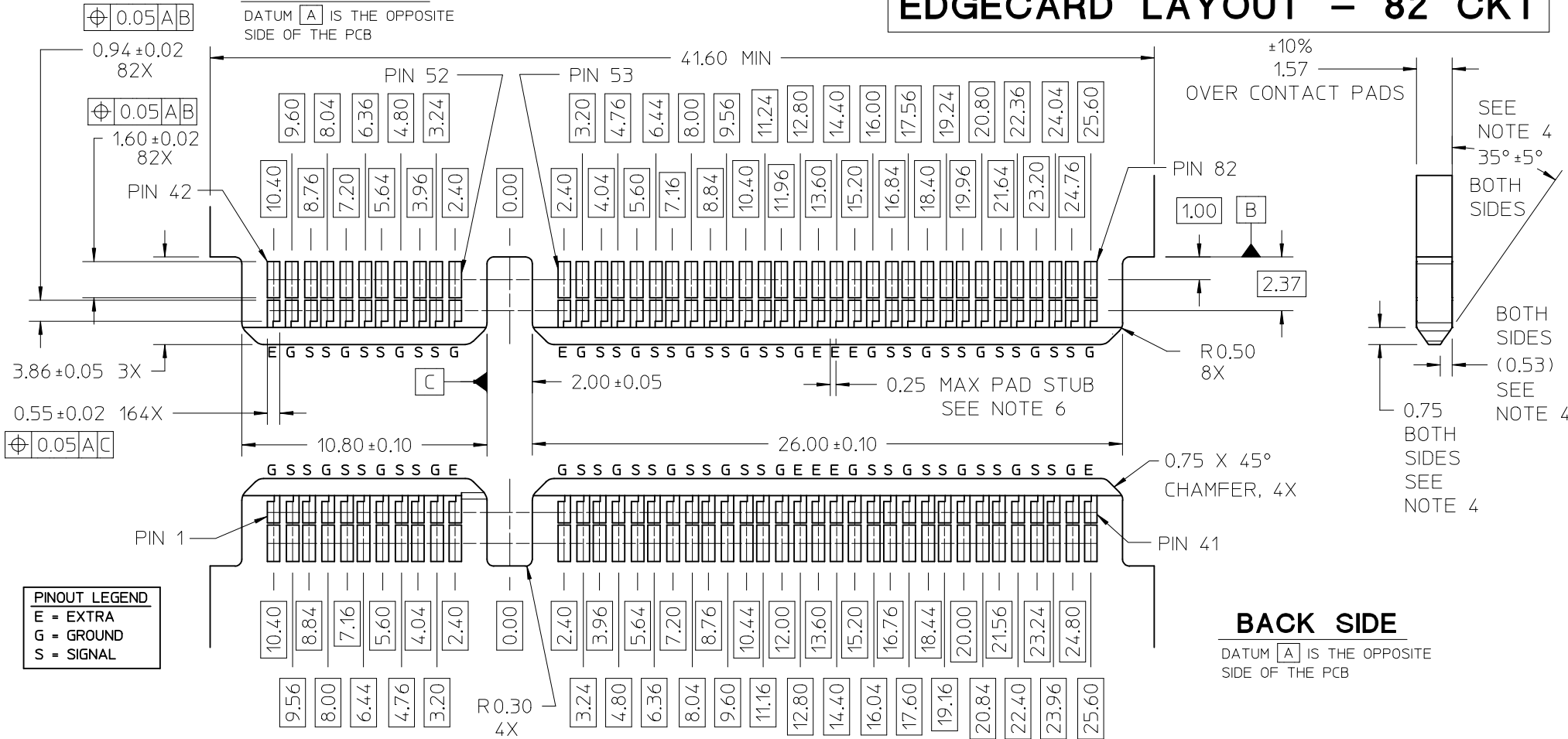
- PIN NUMBERING IS FOR REFERENCE ONLY. OTHER PIN NUMBERS WILL NOT AFFECT THE OPERATION OF THE CONNECTOR.
- EDGE CARD SHOULDERS STOP ON RECEPTACLE SHOULDERS. EDGE CARD BOTTOM DOES NOT CONTACT RECEPTACLE PCB.
- PAD SET BACK FROM CHAMFER ENOUGH TO ACCOMMODATE LARGEST CHAMFER WITHOUT DAMAGE TO PAD EDGE.
- CHAMFER DEPTH SHOULD BE AS LARGE AS PRACTICAL TO ENSURE CORRECT MATING TO THE RECEPTACLE.
- ALL CHAMFERED EDGES SHOULD BE ROUNDED WHERE POSSIBLE.
- INTERNAL PLATING BRIDGES ARE PREFERRED TO ELIMINATE PAD STUB.

SEE SHEET 1 EC NO: UCP2015-5331 DRWN: JBINGHAM 2015/08/24 CHKD: DMCGOWAN 2015/08/24 APPR: DMCGOWAN 2015/09/18	QUALITY SYMBOLS ▽=0 ▽=0 ▽=0	GENERAL TOLERANCES (UNLESS SPECIFIED)		DIMENSION STYLE MM ONLY		SCALE 7:1	DESIGN UNITS METRIC	THIRD ANGLE PROJECTION	
		4 PLACES ± --- ± ---	mm INCH	DRAWN BY JBINGHAM	DATE 2014/11/11	TITLE SPEEDSTACK RECEPTACLE ASSEMBLY SALES DRAWING			
		3 PLACES ± --- ± ---	± 0.13 ± ---	CHECKED BY DMCGOWAN	DATE 2014/11/11	MATERIAL NO. SEE CHART			
		2 PLACES ± 0.25 ± ---	± --- ± ---	APPROVED BY DMCGOWAN	DATE 2015/01/26	DOCUMENT NO. SD-171450-3000	SHEET NO. 7 OF 8		
DRAFT WHERE APPLICABLE MUST REMAIN WITHIN DIMENSIONS		ANGULAR ±1/2°		THIS DRAWING CONTAINS INFORMATION THAT IS PROPRIETARY TO MOLEX INCORPORATED AND SHOULD NOT BE USED WITHOUT WRITTEN PERMISSION					

EDGECARD LAYOUT – 82 CKT

FRONT SIDE

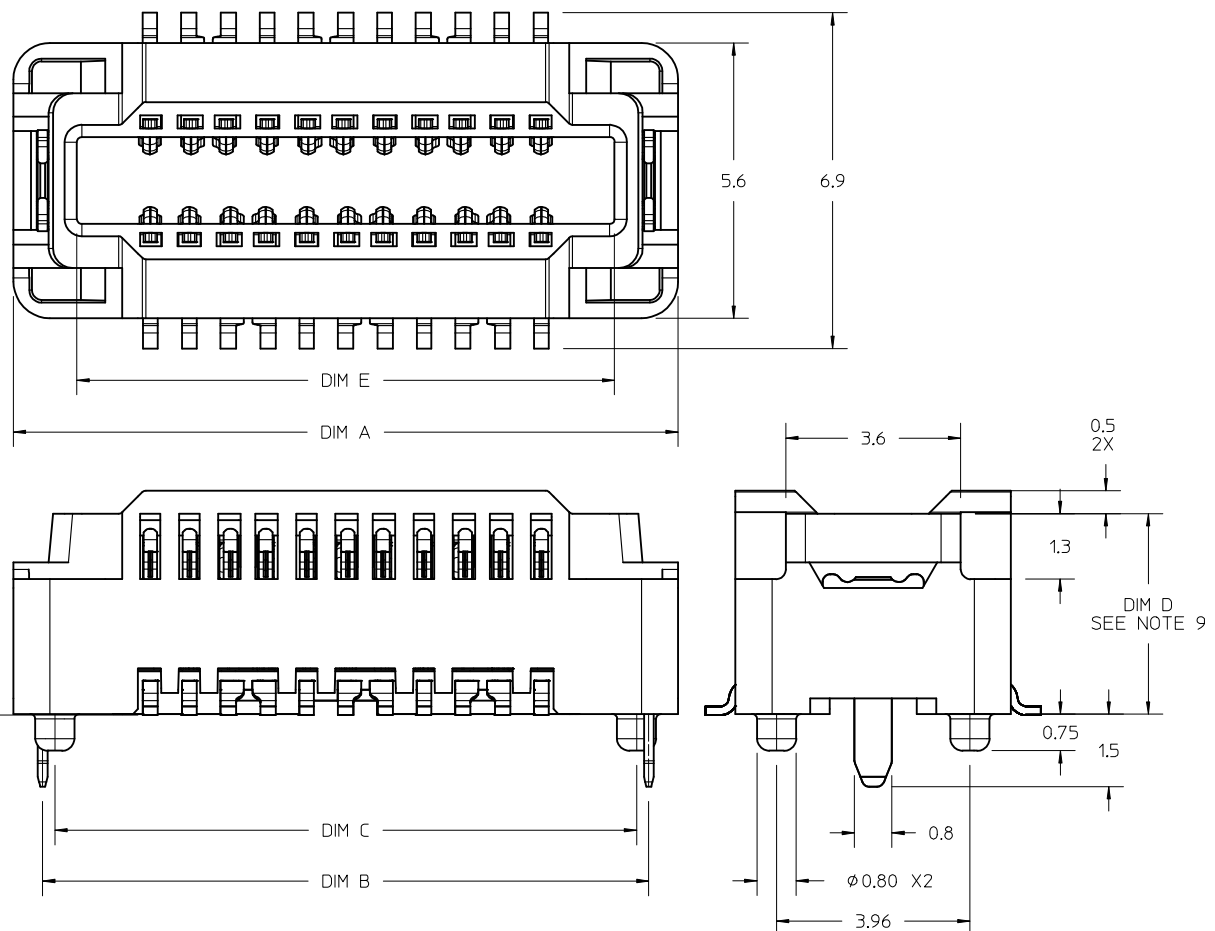
DATUM **A** IS THE OPPOSITE SIDE OF THE PCB



- NOTES:
- PIN NUMBERING IS FOR REFERENCE ONLY. OTHER PIN NUMBERS WILL NOT AFFECT THE OPERATION OF THE CONNECTOR.
 - EDGE CARD SHOULDERS STOP ON RECEPTACLE SHOULDERS. EDGE CARD BOTTOM DOES NOT CONTACT RECEPTACLE PCB.
 - PAD SET BACK FROM CHAMFER ENOUGH TO ACCOMMODATE LARGEST CHAMFER WITHOUT DAMAGE TO PAD EDGE.
 - CHAMFER DEPTH SHOULD BE AS LARGE AS PRACTICAL TO ENSURE CORRECT MATING TO THE RECEPTACLE.
 - ALL CHAMFERED EDGES SHOULD BE ROUNDED WHERE POSSIBLE.
 - INTERNAL PLATING BRIDGES ARE PREFERRED TO ELIMINATE PAD STUB.

SEE SHEET 1 EC NO: UCP2015-5331 DRAWN: JBINGHAM 2015/08/24 CHKD: DMCGOWAN 2015/08/24 APPR: DMCGOWAN 2015/09/18 REV	QUALITY SYMBOLS	GENERAL TOLERANCES (UNLESS SPECIFIED)	DIMENSION STYLE	SCALE	DESIGN UNITS	THIRD ANGLE PROJECTION	
	$\nabla = 0$ $\nabla = 0$ $\nabla = 0$	mm INCH 4 PLACES ± --- ± --- 3 PLACES ± --- ± --- 2 PLACES ± 0.13 ± --- 1 PLACE ± 0.25 ± --- 0 PLACE ± --- ± ---	MM ONLY	6:1	METRIC	THIRD ANGLE PROJECTION SPEEDSTACK RECEPTACLE ASSEMBLY SALES DRAWING molex DOCUMENT NO. SD-171450-3000 SHEET NO. 8 OF 8	
	DRAWN BY: JBINGHAM CHECKED BY: DMCGOWAN APPROVED BY: DMCGOWAN	DATE: 2015/08/24 DATE: 2015/08/24 DATE: 2015/01/26	DRAWN BY: JBINGHAM CHECKED BY: DMCGOWAN APPROVED BY: DMCGOWAN	DATE: 2014/11/11 DATE: 2014/11/11 DATE: 2015/01/26	TITLE: SEE CHART MATERIAL NO. THIS DRAWING CONTAINS INFORMATION THAT IS PROPRIETARY TO MOLEX INCORPORATED AND SHOULD NOT BE USED WITHOUT WRITTEN PERMISSION		
	SEE CHART SIZE B	ANGULAR ± 1/2° DRAFT WHERE APPLICABLE MUST REMAIN WITHIN DIMENSIONS					

10	9	8	7	6	5	4	3	2	1
PART NUMBER	CKT SIZE	DIFF PAIRS	SPARE CKTS	DIM A	DIM B	DIM C	DIM E	DIM D	
171450-5102	22	6	2	13.6	12.40	11.90	11.0		4.10
171450-5106	60	16	8	28.8	27.60	27.10	26.2		4.10
171450-5114	82	22	10	41.6	40.40	39.90	11.0/ 26.2		4.10

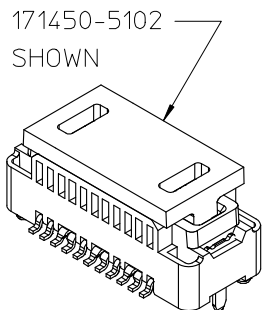
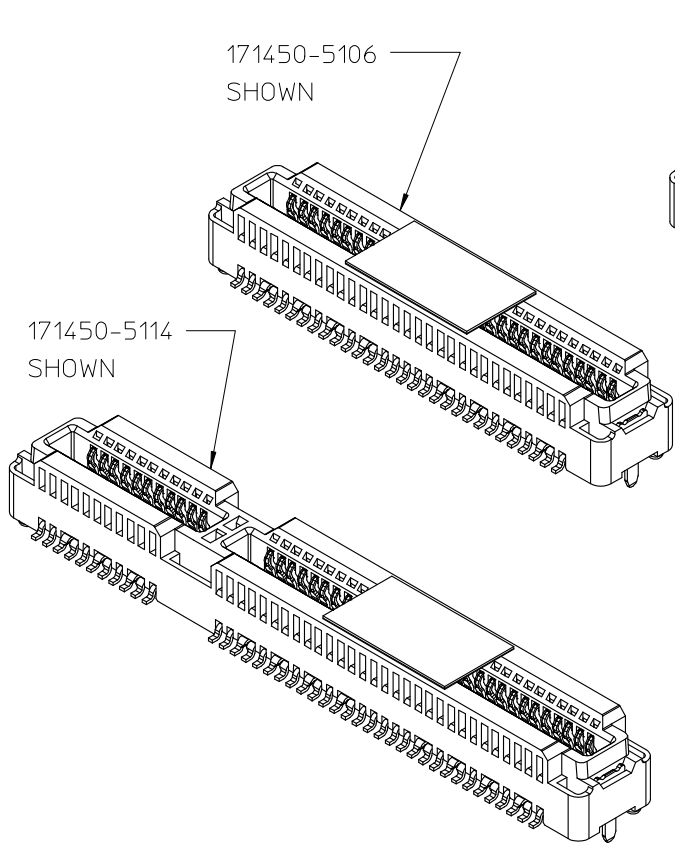


- NOTES:
1. MATERIALS: HOUSING: LCP, UL94V-0, BLACK
CONTACTS: HIGH PERFORMANCE COPPER ALLOY
 2. FINISH: 0.76 μ m MIN SELECT GOLD IN CONTACT AREA,
SELECT MATTE TIN IN TAIL AREA, OVERALL NICKEL.
 3. PRODUCT SPECIFICATION: PS-171446-0001
 4. PACKAGING SPECIFICATION: PK-70873-6002
 5. MATES WITH SPEEDSTACK PLUGS: 171446 & 171810
 6. APPLICATION SPECIFICATION: AS-171450-9999
 7. COSMETIC SPECIFICATION: PS-45499-002 CLASS B
 8. PART STATUS: CONTACT MOLEX
 9. DIM D ON THIS DRAWING PLUS DIM D ON DRAWING # SD-171446-1000
EQUALS THE SYSTEM MATED STACK HEIGHT
 10. PARTS SHIPPED WITH PICK AND PLACE COVERS.

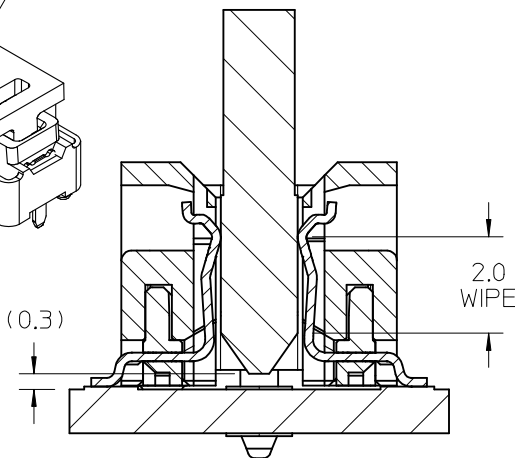
INITIAL RELEASE EC NO: UCP2017-0805 DRWN: JB INGHAM 2016/10/11 CHKD: DMC GOWAN 2016/10/11 APPR: DMC GOWAN 2016/10/25	QUALITY SYMBOLS ▽=0 ▽=0 ▽=0	GENERAL TOLERANCES (UNLESS SPECIFIED)		DIMENSION STYLE MM ONLY		SCALE 10:1	DESIGN UNITS METRIC	THIRD ANGLE PROJECTION		
			mm	INCH	DRAWN BY JB INGHAM	DATE 2016/08/25	TITLE SPEEDSTACK RECEPTACLE ASSEMBLY SALES DRAWING			
		4 PLACES	± ---	± ---	CHECKED BY DMCGOWAN	DATE 2016/08/25	molex			
		3 PLACES	± ---	± ---	APPROVED BY DMCGOWAN	DATE 2016/10/25				
2 PLACES	± 0.13	± ---	MATERIAL NO. SEE CHART		DOCUMENT NO. SD-171450-5000	SHEET NO. 1 OF 8				
1 PLACE	± 0.25	± ---	ANGULAR ±1/2° DRAFT WHERE APPLICABLE MUST REMAIN WITHIN DIMENSIONS							
0 PLACE	± ---	± ---	SIZE B THIS DRAWING CONTAINS INFORMATION THAT IS PROPRIETARY TO MOLEX INCORPORATED AND SHOULD NOT BE USED WITHOUT WRITTEN PERMISSION							

MEZZANINE (PLUG & RECEPTACLE) STACKING CHART

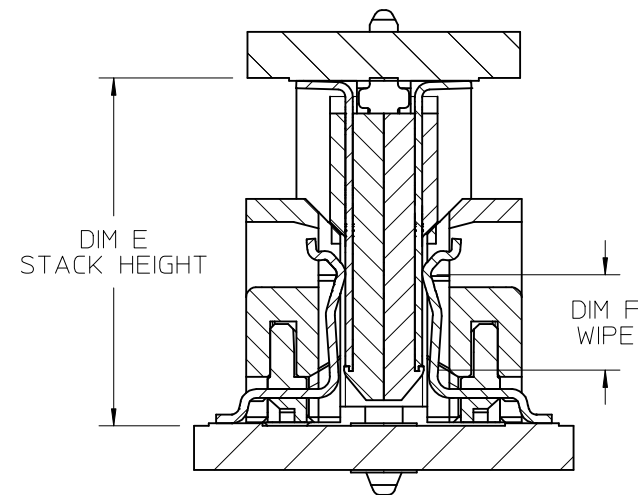
RECEPTACLE OPTIONS	CIRCUITS	MOLEX P/N	HEIGHT	PLUG OPTIONS (1mm WIPE)				PLUG OPTIONS (2mm WIPE)				
				HEIGHT	1mm	2mm	3mm	4mm	1mm	2mm	3mm	4mm
				22 CKT	171446-1101	171446-1102	171446-1103	171446-1104	171446-1105	171446-1106	171446-1107	171446-1108
60 CKT	171446-1109	171446-1110	171446-1111	171446-1112	171446-1113	171446-1114	171446-1115	171446-1116				
22 CKT	171450-5102	4mm	5/1	6/1	7/1	8/1	5/2	6/2	7/2	8/2		
60 CKT	171450-5106											
82 CKT	171450-5114											
				STACK HEIGHT (DIM E)/WIPE (DIM F)								



EDGE CARD APPLICATION

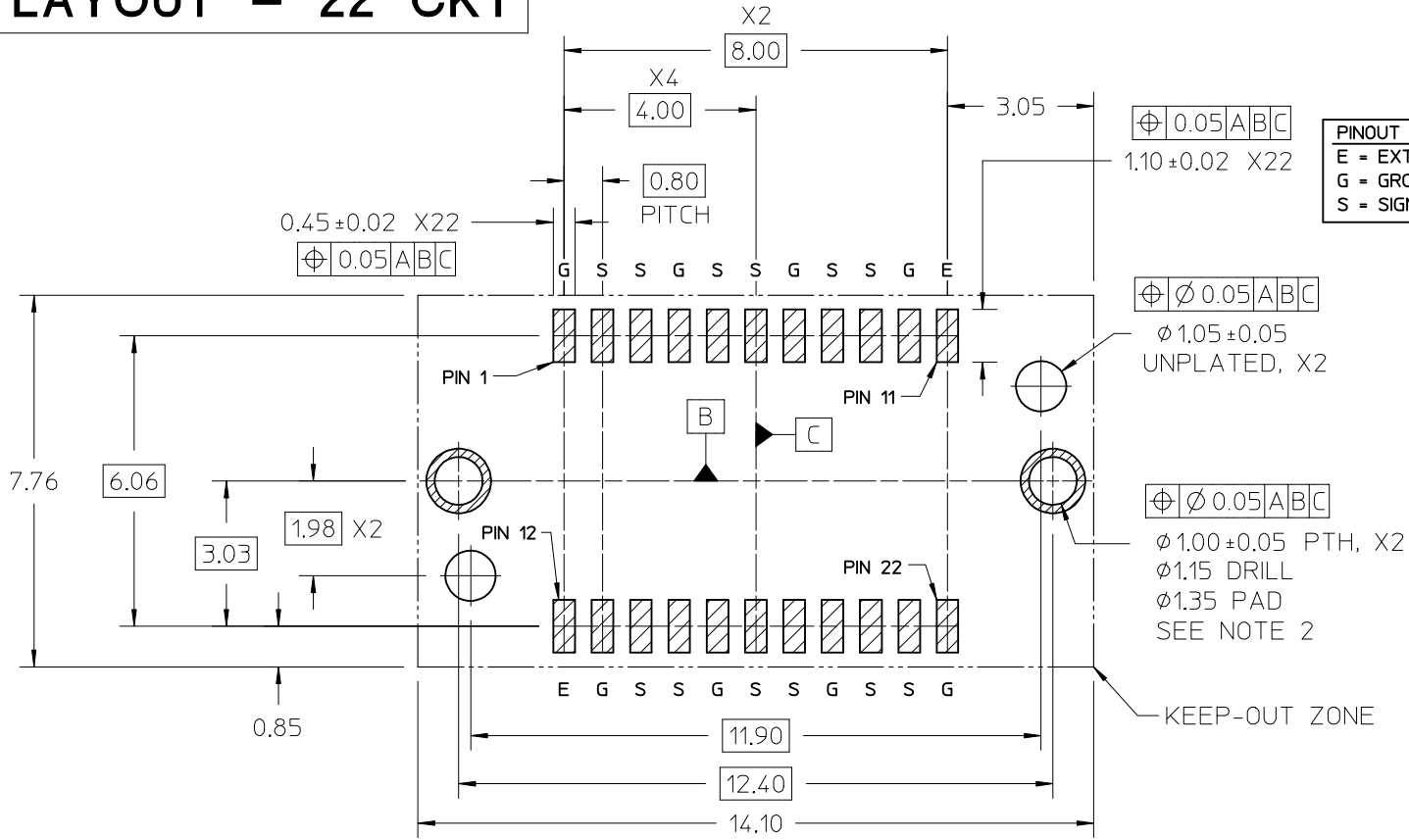


MEZZANINE APPLICATION (PLUG & RECEPTACLE)



SEE SHEET 1 EC NO: UCP2017-0805 DRWN: JB INGHAM 2016/10/11 CHKD: DMCGOWAN 2016/10/11 APPR: DMCGOWAN 2016/10/25	QUALITY SYMBOLS ▽=0 ▽=0 ▽=0	GENERAL TOLERANCES (UNLESS SPECIFIED) mm INCH 4 PLACES ± --- ± --- 3 PLACES ± --- ± --- 2 PLACES ± 0.13 ± --- 1 PLACE ± 0.25 ± --- 0 PLACE ± --- ± --- ANGULAR ± 1/2° DRAFT WHERE APPLICABLE MUST REMAIN WITHIN DIMENSIONS	DIMENSION STYLE MM ONLY		SCALE 10:1	DESIGN UNITS METRIC	THIRD ANGLE PROJECTION
			DRAWN BY JB INGHAM	DATE 2016/08/25	TITLE SPEEDSTACK RECEPTACLE ASSEMBLY SALES DRAWING		
			CHECKED BY DMCGOWAN	DATE 2016/08/25	DOCUMENT NO. SD-171450-5000		
			APPROVED BY DMCGOWAN	DATE 2016/10/25	MATERIAL NO. SEE CHART	SHEET NO. 2 OF 8	
THIS DRAWING CONTAINS INFORMATION THAT IS PROPRIETARY TO MOLEX INCORPORATED AND SHOULD NOT BE USED WITHOUT WRITTEN PERMISSION				molex			

PCB LAYOUT - 22 CKT



PINOUT LEGEND
 E = EXTRA
 G = GROUND
 S = SIGNAL

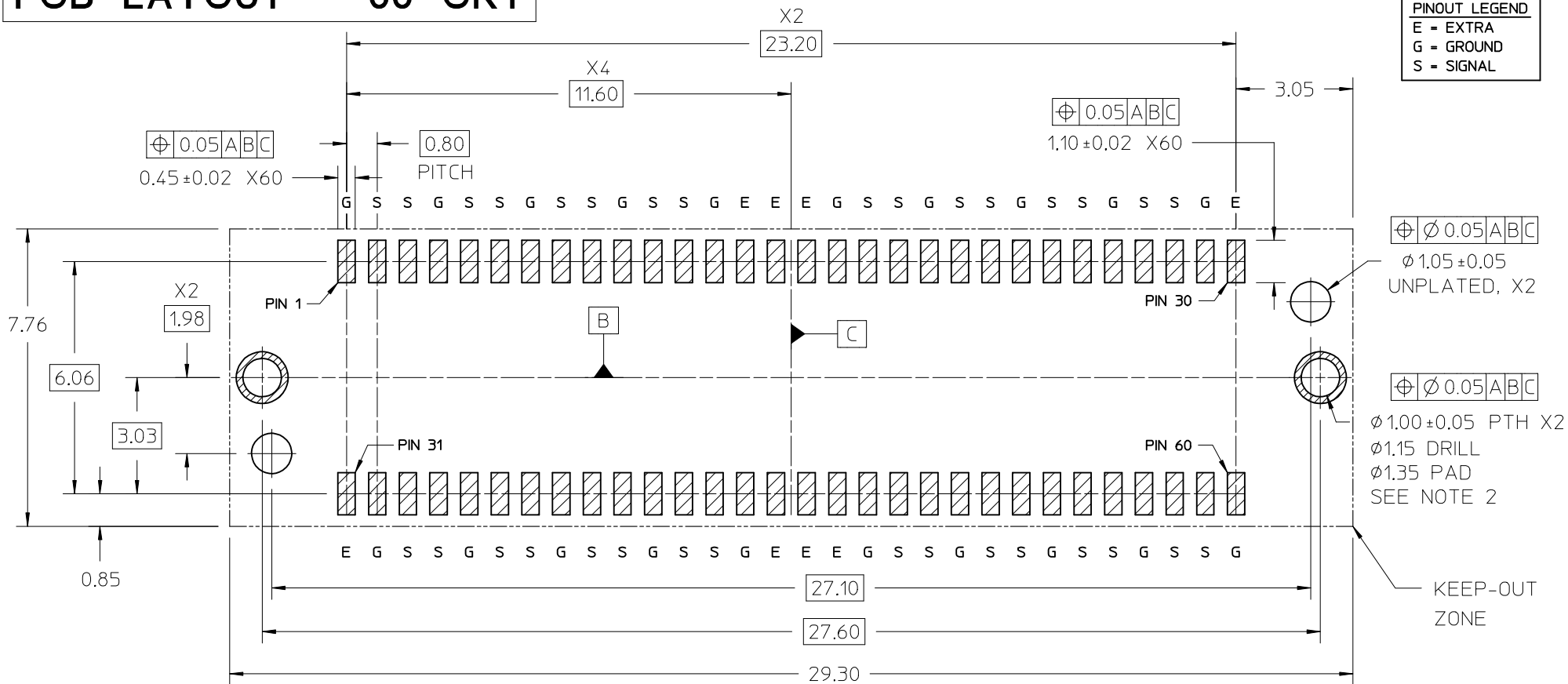
PCB LAYOUT (COMPONENT SIDE)
 SOLDER PASTE THICKNESS: 0.15 MIN
 DATUM [A] IS THE BOTTOM SURFACE OF THE PCB

- NOTES:
- PIN NUMBERING IS FOR REFERENCE ONLY. OTHER PIN NUMBERS WILL NOT AFFECT THE OPERATION OF THE CONNECTOR.
 - RETENTION NAIL MUST BE SOLDERED ONTO THE PCB FOR PROPER CONNECTOR FUNCTION.

SEE SHEET 1 EC NO: UCP2017-0805 DRAWN: JBINGHAM 2016/10/11 CHKD: DMCGOWAN 2016/10/11 APPR: DMCGOWAN 2016/10/25	QUALITY SYMBOLS ▽=0 ▽=0 ▽=0	GENERAL TOLERANCES (UNLESS SPECIFIED)		DIMENSION STYLE MM ONLY		SCALE 10:1	DESIGN UNITS METRIC	THIRD ANGLE PROJECTION			
		4 PLACES ± --- ± --- 3 PLACES ± --- ± --- 2 PLACES ± 0.13 ± --- 1 PLACE ± 0.25 ± --- 0 PLACE ± --- ± ---		DRAWN BY JBINGHAM		DATE 2016/08/25		TITLE SPEEDSTACK RECEPTACLE ASSEMBLY SALES DRAWING			
		ANGULAR ±1/2° DRAFT WHERE APPLICABLE MUST REMAIN WITHIN DIMENSIONS		APPROVED BY DMCGOWAN		DATE 2016/10/25		MATERIAL NO. SEE CHART			
								DOCUMENT NO. SD-171450-5000		SHEET NO. 3 OF 8	

THIS DRAWING CONTAINS INFORMATION THAT IS PROPRIETARY TO MOLEX INCORPORATED AND SHOULD NOT BE USED WITHOUT WRITTEN PERMISSION

PCB LAYOUT - 60 CKT



PINOUT LEGEND	
E	= EXTRA
G	= GROUND
S	= SIGNAL

PCB LAYOUT (COMPONENT SIDE)

SOLDER PASTE THICKNESS: 0.15 MIN
DATUM [A] IS THE BOTTOM SURFACE OF THE PCB

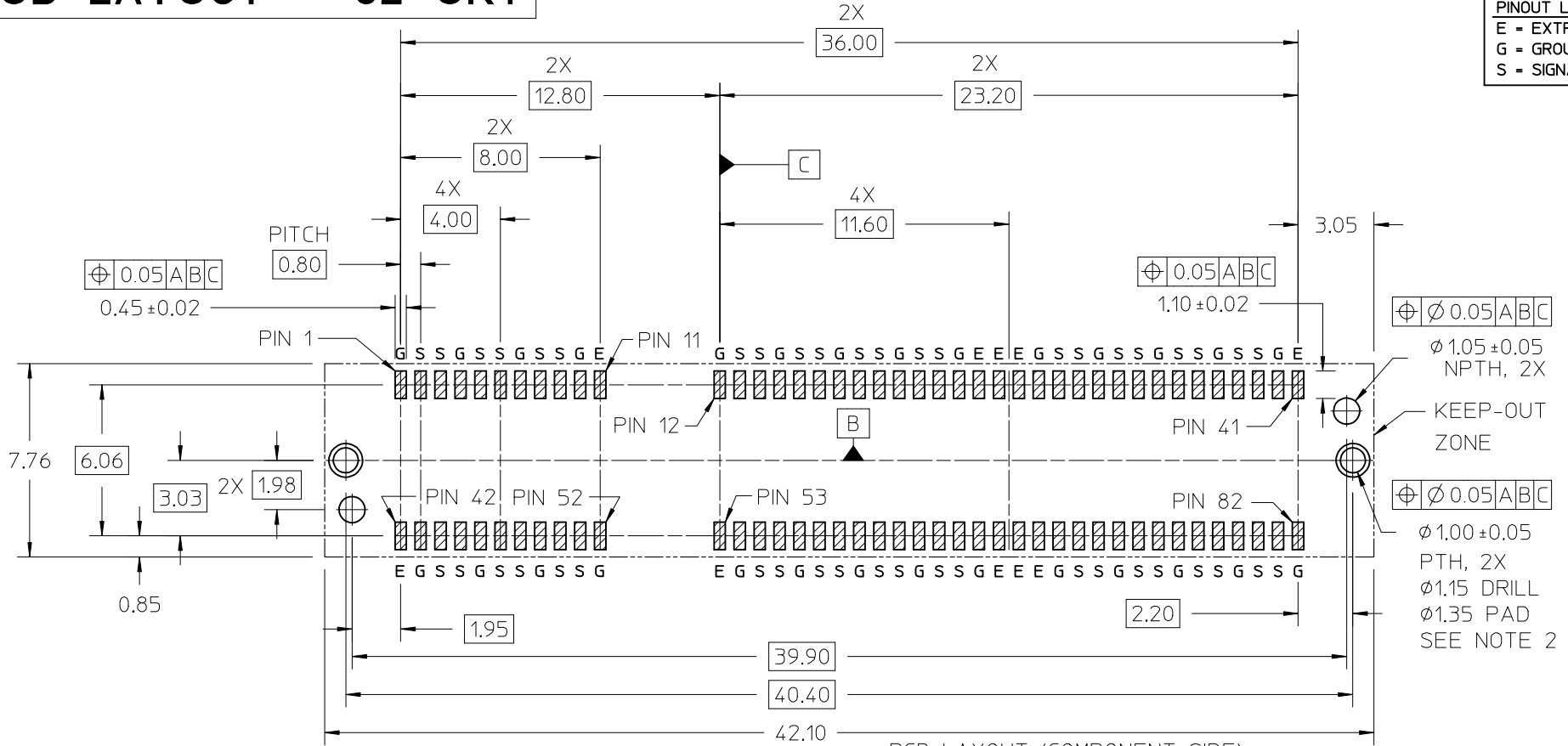
NOTES:

- PIN NUMBERING IS FOR REFERENCE ONLY. OTHER PIN NUMBERS WILL NOT AFFECT THE OPERATION OF THE CONNECTOR.
- RETENTION NAIL MUST BE SOLDERED ONTO THE PCB FOR PROPER CONNECTOR FUNCTION.

SEE SHEET 1 EC NO: UCP2017-0805 DRAWN: JB INGHAM 2016/10/11 CHKD: DMCGOWAN 2016/10/11 APPR: DMCGOWAN 2016/10/25	DESCRIPTION REV	QUALITY SYMBOLS	GENERAL TOLERANCES (UNLESS SPECIFIED)	DIMENSION STYLE MM ONLY		SCALE 10:1	DESIGN UNITS METRIC	THIRD ANGLE PROJECTION		
		▽=0	mm INCH	DRAWN BY JB INGHAM	DATE 2016/08/25	TITLE SPEEDSTACK RECEPTACLE ASSEMBLY SALES DRAWING molex				
		▽=0	4 PLACES ± --- ± ---	CHECKED BY DMCGOWAN	DATE 2016/08/25					
		▽=0	3 PLACES ± --- ± ---	APPROVED BY DMCGOWAN		DATE 2016/10/25	DOCUMENT NO. SD-171450-5000	SHEET NO. 4 OF 8		
			ANGULAR ±1/2° DRAFT WHERE APPLICABLE MUST REMAIN WITHIN DIMENSIONS	MATERIAL NO. SEE CHART		THIS DRAWING CONTAINS INFORMATION THAT IS PROPRIETARY TO MOLEX INCORPORATED AND SHOULD NOT BE USED WITHOUT WRITTEN PERMISSION				

PCB LAYOUT - 82 CKT

PINOUT LEGEND	
E	- EXTRA
G	- GROUND
S	- SIGNAL



PCB LAYOUT (COMPONENT SIDE)

SOLDER PASTE THICKNESS: 0.15 MIN

DATUM A IS THE BOTTOM SURFACE OF THE PCB

NOTES:

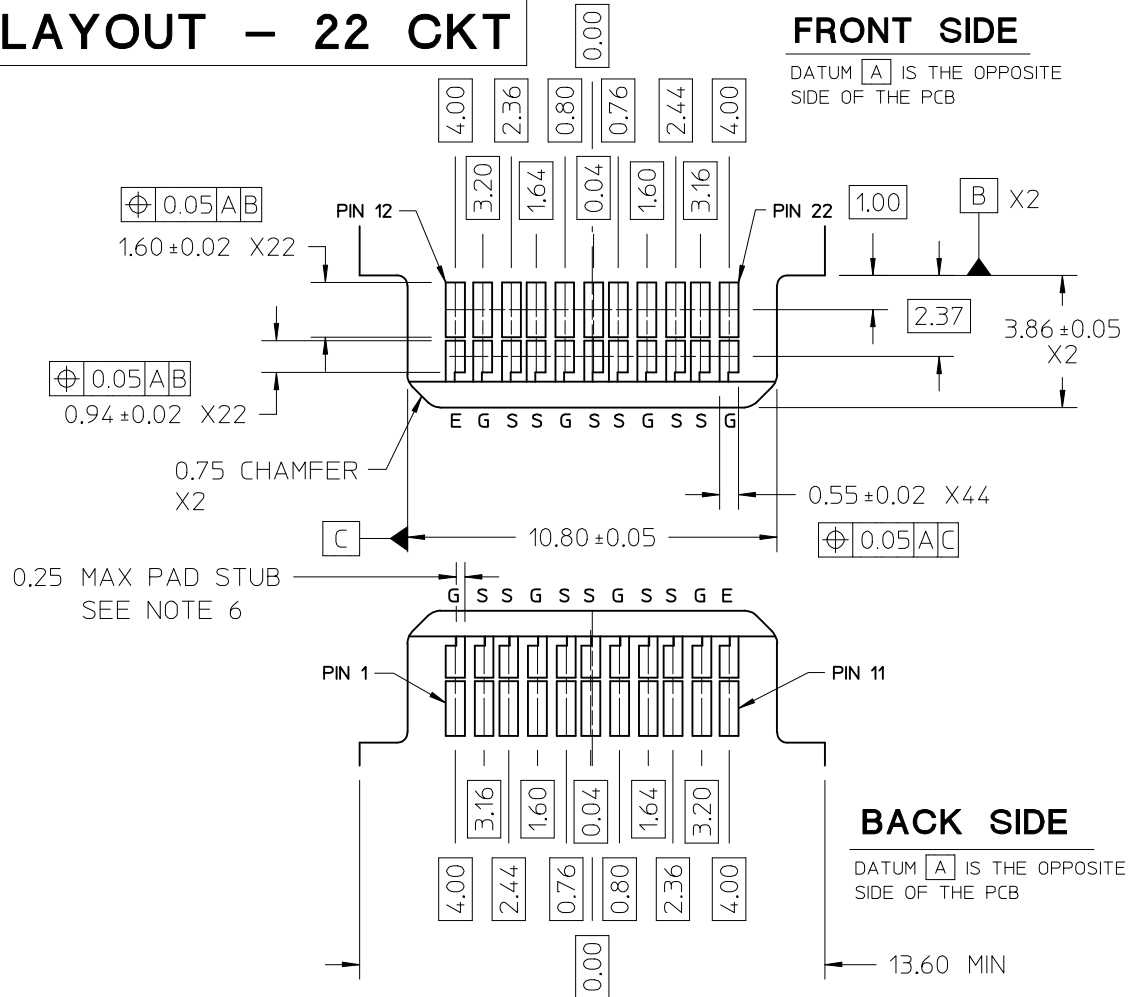
- PIN NUMBERING IS FOR REFERENCE ONLY. OTHER PIN NUMBERS WILL NOT AFFECT THE OPERATION OF THE CONNECTOR.
- RETENTION NAIL MUST BE SOLDERED ONTO THE PCB FOR PROPER CONNECTOR FUNCTION.

SEE SHEET 1 EC NO: UCP2017-0805 DRAWN: JBINGHAM 2016/10/11 CHKD: DMCGOWAN 2016/10/11 APPR: DMCGOWAN 2016/10/25 REV A	QUALITY SYMBOLS ▽=0 ▽=0 ▽=0	GENERAL TOLERANCES (UNLESS SPECIFIED)		DIMENSION STYLE MM ONLY		SCALE 6:1	DESIGN UNITS METRIC	THIRD ANGLE PROJECTION	
		4 PLACES ± --- ± ---	3 PLACES ± --- ± ---	DRAWN BY JBINGHAM	DATE 2016/08/25	TITLE SPEEDSTACK RECEPTACLE ASSEMBLY SALES DRAWING			
		2 PLACES ± 0.13 ± ---	1 PLACE ± 0.25 ± ---	CHECKED BY DMCGOWAN	DATE 2016/08/25	APPROVED BY DMCGOWAN			
		0 PLACE ± --- ± ---	MATERIAL NO. SEE CHART		DATE 2016/10/25	DOCUMENT NO. SD-171450-5000	SHEET NO. 5 OF 8		
ANGULAR ± 1/2° DRAFT WHERE APPLICABLE MUST REMAIN WITHIN DIMENSIONS				THIS DRAWING CONTAINS INFORMATION THAT IS PROPRIETARY TO MOLEX INCORPORATED AND SHOULD NOT BE USED WITHOUT WRITTEN PERMISSION					

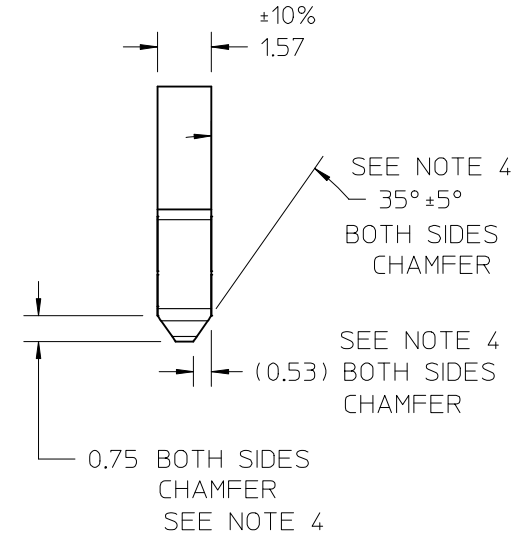
EDGECARD LAYOUT - 22 CKT

FRONT SIDE

DATUM **A** IS THE OPPOSITE SIDE OF THE PCB



OVER CONTACT PADS



BACK SIDE

DATUM **A** IS THE OPPOSITE SIDE OF THE PCB

PINOUT LEGEND

- E = EXTRA
- G = GROUND
- S = SIGNAL

- NOTES:
1. PIN NUMBERING IS FOR REFERENCE ONLY. OTHER PIN NUMBERS WILL NOT AFFECT THE OPERATION OF THE CONNECTOR.
 2. EDGE CARD SHOULDERS STOP ON RECEPTACLE SHOULDERS. EDGE CARD BOTTOM DOES NOT CONTACT RECEPTACLE PCB.
 3. PAD SET BACK FROM CHAMFER ENOUGH TO ACCOMMODATE LARGEST CHAMFER WITHOUT DAMAGE TO PAD EDGE.
 4. CHAMFER DEPTH SHOULD BE AS LARGE AS PRACTICAL TO ENSURE CORRECT MATING TO THE RECEPTACLE.
 5. ALL CHAMFERED EDGES SHOULD BE ROUNDED WHERE POSSIBLE.
 6. INTERNAL PLATING BRIDGES ARE PREFERRED TO ELIMINATE PAD STUB.

SEE SHEET 1	EC NO: UCP2017-0805	QUALITY SYMBOLS	GENERAL TOLERANCES (UNLESS SPECIFIED)	DIMENSION STYLE		SCALE 7:1	DESIGN UNITS METRIC	THIRD ANGLE PROJECTION					
	DRWN: JBINGHAM 2016/10/11	▽=0		mm	INCH			DRAWN BY JBINGHAM	DATE 2016/08/25	TITLE SPEEDSTACK RECEPTACLE ASSEMBLY SALES DRAWING			
	CHKD: DMCGOWAN 2016/10/11	▽=0		1 PLACE ± 0.25 ± --- ± --- ± ---								CHECKED BY DMCGOWAN	DATE 2016/08/25
	APPR: DMCGOWAN 2016/10/25	▽=0		0 PLACE ± --- ± --- ± ---									
REV A	DESCRIPTION	ANGULAR ± 1/2° DRAFT WHERE APPLICABLE MUST REMAIN WITHIN DIMENSIONS		MATERIAL NO. SEE CHART		DOCUMENT NO. SD-171450-5000	SHEET NO. 6 OF 8						

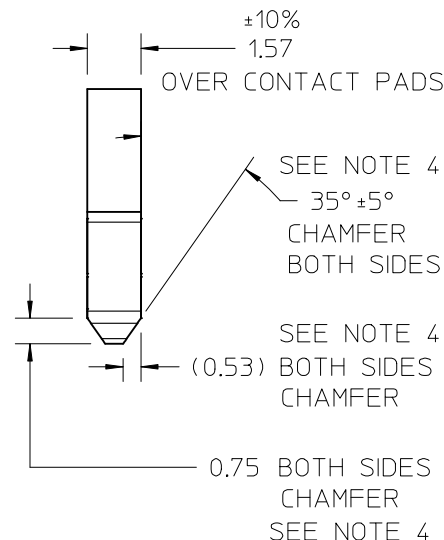
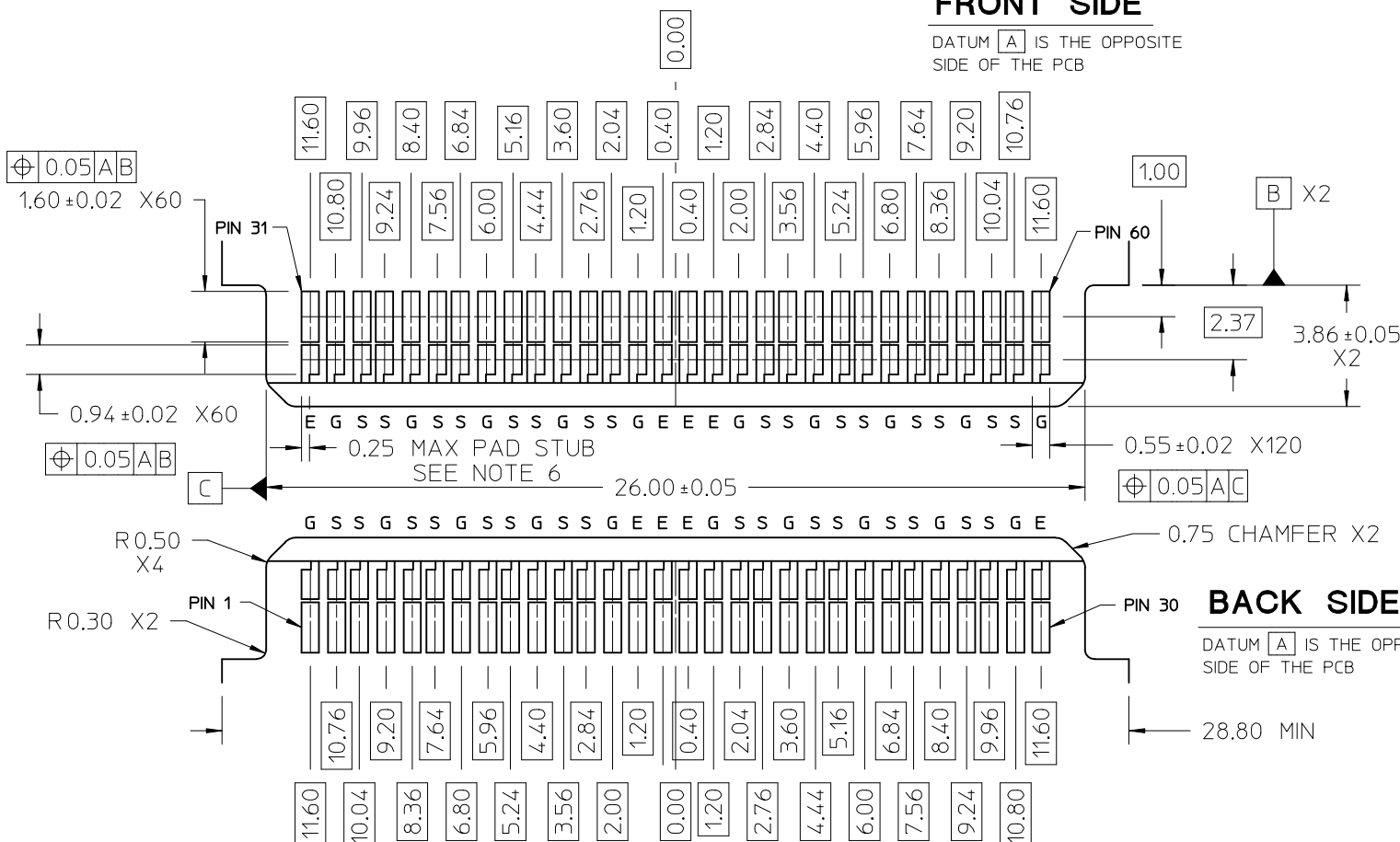
THIS DRAWING CONTAINS INFORMATION THAT IS PROPRIETARY TO MOLEX INCORPORATED AND SHOULD NOT BE USED WITHOUT WRITTEN PERMISSION

EDGE CARD LAYOUT - 60 CKT

FRONT SIDE

DATUM [A] IS THE OPPOSITE SIDE OF THE PCB

PINOUT LEGEND	
E	= EXTRA
G	= GROUND
S	= SIGNAL



BACK SIDE

DATUM [A] IS THE OPPOSITE SIDE OF THE PCB

- NOTES:
- PIN NUMBERING IS FOR REFERENCE ONLY. OTHER PIN NUMBERS WILL NOT AFFECT THE OPERATION OF THE CONNECTOR.
 - EDGE CARD SHOULDERS STOP ON RECEPTACLE SHOULDERS. EDGE CARD BOTTOM DOES NOT CONTACT RECEPTACLE PCB.
 - PAD SET BACK FROM CHAMFER ENOUGH TO ACCOMMODATE LARGEST CHAMFER WITHOUT DAMAGE TO PAD EDGE.
 - CHAMFER DEPTH SHOULD BE AS LARGE AS PRACTICAL TO ENSURE CORRECT MATING TO THE RECEPTACLE.
 - ALL CHAMFERED EDGES SHOULD BE ROUNDED WHERE POSSIBLE.
 - INTERNAL PLATING BRIDGES ARE PREFERRED TO ELIMINATE PAD STUB.

SEE SHEET 1 EC NO: UCP2017-0805 DRWN: JBINGHAM 2016/10/11 CHKD: DMCGOWAN 2016/10/11 APPR: DMCGOWAN 2016/10/25	QUALITY SYMBOLS
	$\nabla = 0$ $\nabla = 0$ $\nabla = 0$
	DESCRIPTION
	REV

GENERAL TOLERANCES (UNLESS SPECIFIED)		
	mm	INCH
4 PLACES	± ---	± ---
3 PLACES	± ---	± ---
2 PLACES	± 0.13	± ---
1 PLACE	± 0.25	± ---
0 PLACE	± ---	± ---

ANGULAR ±1/2°
DRAFT WHERE APPLICABLE
MUST REMAIN WITHIN DIMENSIONS

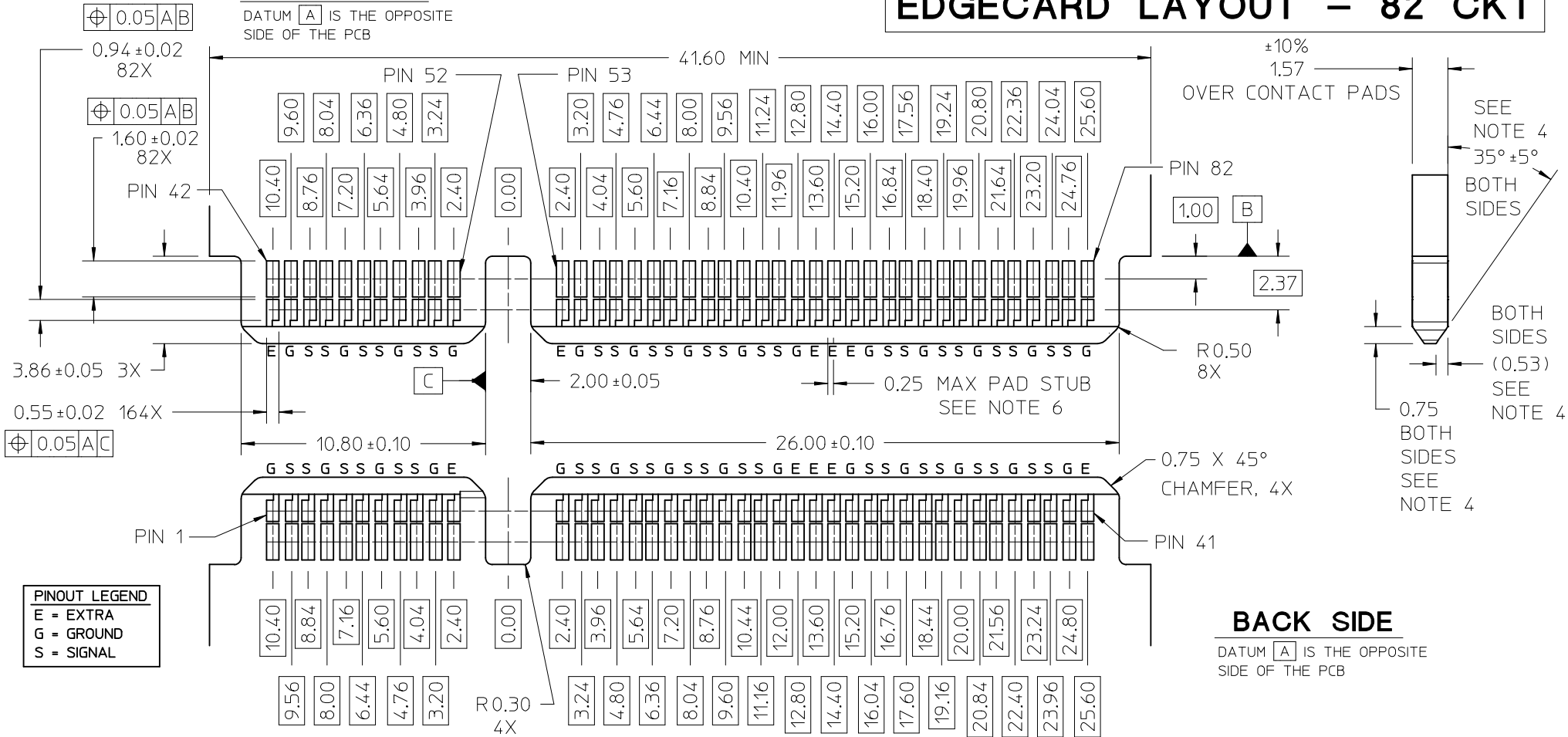
DIMENSION STYLE	
MM ONLY	
DRAWN BY	DATE
JBINGHAM	2016/08/25
CHECKED BY	DATE
DMCGOWAN	2016/08/25
APPROVED BY	DATE
DMCGOWAN	2016/10/25

SCALE	DESIGN UNITS	THIRD ANGLE PROJECTION
7:1	METRIC	
SPEEDSTACK RECEPTACLE ASSEMBLY SALES DRAWING		
MATERIAL NO.	DOCUMENT NO.	SHEET NO.
SEE CHART	SD-171450-5000	7 OF 8
THIS DRAWING CONTAINS INFORMATION THAT IS PROPRIETARY TO MOLEX INCORPORATED AND SHOULD NOT BE USED WITHOUT WRITTEN PERMISSION		

EDGECARD LAYOUT – 82 CKT

FRONT SIDE

DATUM **A** IS THE OPPOSITE SIDE OF THE PCB



BACK SIDE

DATUM **A** IS THE OPPOSITE SIDE OF THE PCB

- NOTES:
- PIN NUMBERING IS FOR REFERENCE ONLY. OTHER PIN NUMBERS WILL NOT AFFECT THE OPERATION OF THE CONNECTOR.
 - EDGE CARD SHOULD STOP ON RECEPTACLE SHOULDERS. EDGE CARD BOTTOM DOES NOT CONTACT RECEPTACLE PCB.
 - PAD SET BACK FROM CHAMFER ENOUGH TO ACCOMMODATE LARGEST CHAMFER WITHOUT DAMAGE TO PAD EDGE.
 - CHAMFER DEPTH SHOULD BE AS LARGE AS PRACTICAL TO ENSURE CORRECT MATING TO THE RECEPTACLE.
 - ALL CHAMFERED EDGES SHOULD BE ROUNDED WHERE POSSIBLE.
 - INTERNAL PLATING BRIDGES ARE PREFERRED TO ELIMINATE PAD STUB.

SEE SHEET 1 EC NO: UCP2017-0805 DRWN: JB INGHAM 2016/10/11 CHKD: DMCGOWAN 2016/10/11 APPR: DMCGOWAN 2016/10/25	QUALITY SYMBOLS ▽=0 ▽=0 ▽=0	GENERAL TOLERANCES (UNLESS SPECIFIED) mm INCH 4 PLACES ± --- ± --- 3 PLACES ± --- ± --- 2 PLACES ± 0.13 ± --- 1 PLACE ± 0.25 ± --- 0 PLACE ± --- ± ---	DIMENSION STYLE MM ONLY DRAWN BY DATE JB INGHAM 2016/08/25 CHECKED BY DATE DMCGOWAN 2016/08/25 APPROVED BY DATE DMCGOWAN 2016/10/25	SCALE 6:1 DESIGN UNITS METRIC THIRD ANGLE PROJECTION	TITLE SPEEDSTACK RECEPTACLE ASSEMBLY SALES DRAWING molex
		ANGULAR ± 1/2° DRAFT WHERE APPLICABLE MUST REMAIN WITHIN DIMENSIONS	MATERIAL NO. SEE CHART	DOCUMENT NO. SD-171450-5000	SHEET NO. 8 OF 8
		THIS DRAWING CONTAINS INFORMATION THAT IS PROPRIETARY TO MOLEX INCORPORATED AND SHOULD NOT BE USED WITHOUT WRITTEN PERMISSION			
		REV A			