



International Rectifier (Infineon)

BTM7710GPAUMA1

Part Number:	BTM7710GPAUMA1
Manufacturer/Brand:	International Rectifier (Infineon Technologies)
Product description:	IC BRIDGE DRIVER PAR TO263-15
Datasheets:	BTM7710GPAUMA1.pdf
RoHS Status:	Lead free / RoHS Compliant
Stock Condition:	18363 pcs stock
Ship From:	Hong Kong
Shipment Way:	DHL/Fedex/TNT/UPS/EMS

REQUEST FOR QUOTATION

Technologies

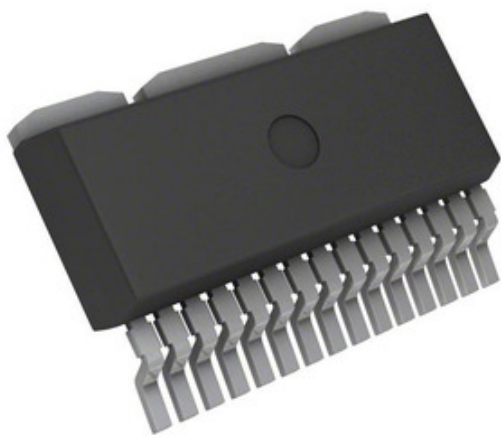


Image may be representation. See specifications for product details.

Specifications of BTM7710GPAUMA1

PART NUMBER	BTM7710GPAUMA1
MANUFACTURER	International Rectifier (Infineon Technologies)
DESCRIPTION	IC BRIDGE DRIVER PAR TO263-15
LEAD FREE STATUS / ROHS STATUS	Lead free / RoHS Compliant
QUANTITY AVAILABLE	18363 pcs
DATA SHEET	BTM7710GPAUMA1.pdf
VOLTAGE - SUPPLY	1.8 V ~ 42 V
VOLTAGE - LOAD	1.8 V ~ 42 V
TECHNOLOGY	DMOS
SUPPLIER DEVICE PACKAGE	P-TO263-15-1
SERIES	TrilithiC™
RDS ON (TYP)	40 mOhm LS, 70 mOhm HS
PACKAGING	Tape & Reel (TR)
PACKAGE / CASE	TO-263-18 (15 Leads + 3 Tabs)
OUTPUT CONFIGURATION	Half Bridge (2)
OTHER NAMES	BTM7710GP BTM7710GP-ND BTM7710GPAUMA1TR BTM7710GPTR BTM7710GPTR-ND SP000303743
OPERATING TEMPERATURE	-40°C ~ 110°C (TJ)
MOUNTING TYPE	Surface Mount
MOISTURE SENSITIVITY LEVEL (MSL)	3 (168 Hours)
LOAD TYPE	Inductive
LEAD FREE STATUS / ROHS STATUS	Lead free / RoHS Compliant
INTERFACE	Logic
FEATURES	Status Flag
FAULT PROTECTION	Over Temperature, Short Circuit, UVLO
DETAILED DESCRIPTION	Half Bridge (2) Driver DC Motors, General Purpose DMOS P-TO263-15-1
CURRENT - PEAK OUTPUT	15A
CURRENT - OUTPUT / CHANNEL	-
BASE PART NUMBER	BTM7710
APPLICATIONS	DC Motors, General Purpose

Related Tags

International Rectifier (Infineon Technologies) BTM7710GPAUMA1	BTM7710GPAUMA1 Distributor	BTM7710GPAUMA1 Supplier
BTM7710GPAUMA1 Price	BTM7710GPAUMA1 Pictures	BTM7710GPAUMA1 Image
BTM7710GPAUMA1 PDF Datasheet	BTM7710GPAUMA1 Download Datasheet	BTM7710GPAUMA1 Datasheet
BTM7710GPAUMA1 Stock	Buy BTM7710GPAUMA1	Buy International Rectifier (Infineon Technologies) BTM7710GPAUMA1
International Rectifier (Infineon Technologies) BTM7710GPAUMA1	International Rectifier (Infineon Technologies) Supplier	International Rectifier (Infineon Technologies) Distributor
International Rectifier (Infineon Technologies) BTM7710GPAUMA1	International Rectifier BTM7710GPAUMA1	Infineon Technologies BTM7710GPAUMA1
International Rectifier (Infineon Technologies) BTM7710GPAUMA1	IR (Infineon Technologies) BTM7710GPAUMA1	

Related Products

<p>BTM7745GXUMA1 Manufacturers: International Rectifier (Infineon Technologies) Description: IC MOTOR DRIVER PAR 36DSO In stock: 29716 pcs</p> <p>RFQ</p>	<p>BTM441 Manufacturers: Laird Technologies Description: BLUETOOTH ENHANCED MULTIPOINT In stock: 4595 pcs</p> <p>RFQ</p>
<p>BTM7742GXUMA1 Manufacturers: International Rectifier (Infineon Technologies) Description: IC MOTOR DRIVER PAR 36DSO In stock: 30346 pcs</p> <p>RFQ</p>	<p>BTM7700GXUMA1 Manufacturers: International Rectifier (Infineon Technologies) Description: IC BRIDGE DRIVER PAR 28DSO In stock: 20356 pcs</p> <p>RFQ</p>
<p>BTM7740GXUMA1 Manufacturers: International Rectifier (Infineon Technologies) Description: IC BRIDGE DRIVER PAR 28DSO In stock: 34614 pcs</p> <p>RFQ</p>	<p>BTM7750GPAUMA1 Manufacturers: International Rectifier (Infineon Technologies) Description: IC BRIDGE DRIVER PAR TO263-15 In stock: 14073 pcs</p> <p>RFQ</p>
<p>BTM521 Manufacturers: Laird Technologies Description: RF TXRX MOD BLUETOOTH CHIP ANT In stock: 2921 pcs</p> <p>RFQ</p>	<p>BTM7741GXUMA1 Manufacturers: International Rectifier (Infineon Technologies) Description: IC BRIDGE DRIVER PAR 28DSO In stock: 39621 pcs</p> <p>RFQ</p>
<p>BTM443 Manufacturers: Laird Technologies Description: RF TXRX MOD BLUETOOTH CHIP ANT In stock: 5354 pcs</p> <p>RFQ</p>	<p>BTM7710GXUMA1 Manufacturers: International Rectifier (Infineon Technologies) Description: IC BRIDGE DRIVER PAR 28DSO In stock: 19588 pcs</p> <p>RFQ</p>
<p>BTM511 Manufacturers: Laird Technologies Description: RF TXRX MOD BLUETOOTH CHIP ANT In stock: 3925 pcs</p> <p>RFQ</p>	<p>BTM431 Manufacturers: Laird Technologies Description: RF TXRX MOD BLUETOOTH CHIP ANT In stock: 4569 pcs</p> <p>RFQ</p>

