



International Rectifier (Infineon)

### BTS134DATMA1

Part Number:	BTS134DATMA1
Manufacturer/Brand:	International Rectifier (Infineon Technologies)
Product description:	IC PWR SWITCH 42V 3.5A TO252
Datasheets:	<a href="#">BTS134DATMA1.pdf</a>
RoHs Status:	Lead free / RoHS Compliant
Stock Condition:	116497 pcs stock
Ship From:	Hong Kong
Shipment Way:	DHL/Fedex/TNT/UPS/EMS

**REQUEST FOR QUOTATION**

#### Technologies)

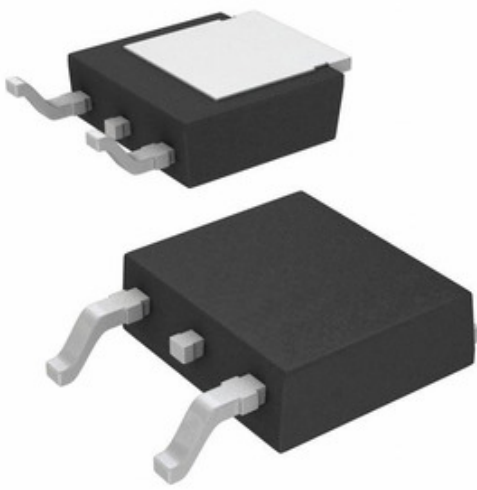


Image may be representation. See specifications for product details.

#### Specifications of BTS134DATMA1

PART NUMBER	BTS134DATMA1
MANUFACTURER	International Rectifier (Infineon Technologies)
DESCRIPTION	IC PWR SWITCH 42V 3.5A TO252
LEAD FREE STATUS / ROHS STATUS	Lead free / RoHS Compliant
QUANTITY AVAILABLE	116497 pcs
DATA SHEET	<a href="#">BTS134DATMA1.pdf</a>
VOLTAGE - SUPPLY (VCC/VDD)	Not Required
VOLTAGE - LOAD	42V (Max)
SWITCH TYPE	General Purpose
SUPPLIER DEVICE PACKAGE	PG-TO252-3
SERIES	HITFET®
RDS ON (TYP)	35 mOhm
RATIO - INPUT:OUTPUT	1:1
PACKAGING	Tape & Reel (TR)
PACKAGE / CASE	TO-252-3, DPak (2 Leads + Tab), SC-63
OUTPUT TYPE	N-Channel
OUTPUT CONFIGURATION	Low Side
OTHER NAMES	BTS134D BTS134D-ND BTS134DATMA1TR BTS134DT BTS134DT-ND BTS134DTR BTS134DTR-ND BTS134DXT SP000276446 SP000506208
OPERATING TEMPERATURE	-40°C ~ 150°C (TJ)
NUMBER OF OUTPUTS	1
MOISTURE SENSITIVITY LEVEL (MSL)	1 (Unlimited)
LEAD FREE STATUS / ROHS STATUS	Lead free / RoHS Compliant
INTERFACE	On/Off
INPUT TYPE	Non-Inverting
FEATURES	Auto Restart
FAULT PROTECTION	Current Limiting (Fixed), Over Temperature, Over Voltage
CURRENT - OUTPUT (MAX)	3.5A
BASE PART NUMBER	BTS134

#### Related Tags

International Rectifier (Infineon Technologies) BTS134DATMA1	BTS134DATMA1 Distributor	BTS134DATMA1 Supplier
BTS134DATMA1 Price	BTS134DATMA1 Pictures	BTS134DATMA1 Image
BTS134DATMA1 PDF Datasheet	BTS134DATMA1 Download Datasheet	BTS134DATMA1 Datasheet
BTS134DATMA1 Stock	Buy BTS134DATMA1	Buy International Rectifier (Infineon Technologies) BTS134DATMA1
International Rectifier (Infineon Technologies) BTS134DATMA1	International Rectifier (Infineon Technologies) Supplier	International Rectifier (Infineon Technologies) Distributor
International Rectifier (Infineon Technologies) BTS134DATMA1	International Rectifier BTS134DATMA1	Infineon Technologies BTS134DATMA1
International Rectifier (Infineon Technologies) BTS134DATMA1	IR (Infineon Technologies) BTS134DATMA1	

#### Related Products

<p><b>BTS134DNT</b> Manufacturers: International Rectifier (Infineon Technologies) Description: IC PWR SWITCH 42V 3.5A TO252 In stock: 3532 pcs</p> <p><b>RFQ</b></p>	<p><b>BTS133 E3045A</b> Manufacturers: International Rectifier (Infineon Technologies) Description: IC SWITCH SMART LOWSIDE TO220SMD In stock: 5137 pcs</p> <p><b>RFQ</b></p>
<p><b>BTS141BKSA1</b> Manufacturers: International Rectifier (Infineon Technologies) Description: IC LOW SIDE PWR SWITCH TO220-3 In stock: 24156 pcs</p> <p><b>RFQ</b></p>	<p><b>BTS133E3064NKSA1</b> Manufacturers: International Rectifier (Infineon Technologies) Description: IC SWITCH LOSIDE PWR N-CH TO-220 In stock: 3381 pcs</p> <p><b>RFQ</b></p>
<p><b>BTS133TCBUMA1</b> Manufacturers: International Rectifier (Infineon Technologies) Description: IC SWITCH SMART LOWSIDE TO263-3 In stock: 81606 pcs</p> <p><b>RFQ</b></p>	<p><b>BTS141 E3045A</b> Manufacturers: International Rectifier (Infineon Technologies) Description: IC SWITCH SMART LOWSIDE TO220SMT In stock: 5989 pcs</p> <p><b>RFQ</b></p>
<p><b>BTS133BKSA1</b> Manufacturers: International Rectifier (Infineon Technologies) Description: IC SWITCH LOSIDE PWR N-CH TO-220 In stock: 31521 pcs</p> <p><b>RFQ</b></p>	<p><b>BTS130A</b> Manufacturers: Essentra Components Description: HEX STANDOFF #6-32 BRASS 7/8" In stock: 104755 pcs</p> <p><b>RFQ</b></p>
<p><b>BTS135A</b> Manufacturers: Essentra Components Description: HEX STANDOFF #6-32 BRASS 1" In stock: 93830 pcs</p> <p><b>RFQ</b></p>	<p><b>BTS133</b> Manufacturers: International Rectifier (Infineon Technologies) Description: MOSFET N-CH 60V 7A TO-220 In stock: 5962 pcs</p> <p><b>RFQ</b></p>
<p><b>BTS140A</b> Manufacturers: Essentra Components Description: HEX STANDOFF #6-32 BRASS 1-1/4" In stock: 68216 pcs</p> <p><b>RFQ</b></p>	<p><b>BTS141</b> Manufacturers: International Rectifier (Infineon Technologies) Description: MOSFET N-CH 60V 12A TO-220 In stock: 3653 pcs</p> <p><b>RFQ</b></p>

