

ON Semiconductor AMI Semiconductor / ON

CS8182YDPSR5G

Part Number: [CS8182YDPSR5G](#)
 Manufacturer/Brand: [AMI Semiconductor / ON Semiconductor](#)
 Product description: [IC REG LIN POS ADJ 200MA D2PAK-5](#)
 Datasheets: [CS8182YDPSR5G.pdf](#)
 RoHS Status: Lead free / RoHS Compliant
 Stock Condition: 81556 pcs stock
 Ship From: Hong Kong
 Shipment Way: DHL/Fedex/TNT/UPS/EMS

Semiconductor

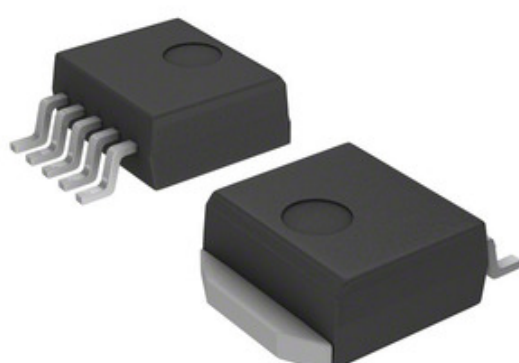


Image may be representation. See specifications for product details.

REQUEST FOR QUOTATION

Specifications of CS8182YDPSR5G

PART NUMBER	CS8182YDPSR5G
MANUFACTURER	AMI Semiconductor / ON Semiconductor
DESCRIPTION	IC REG LIN POS ADJ 200MA D2PAK-5
LEAD FREE STATUS / ROHS STATUS	Lead free / RoHS Compliant
QUANTITY AVAILABLE	81556 pcs
DATA SHEET	CS8182YDPSR5G.pdf
VOLTAGE DROPOUT (MAX)	0.6V @ 200mA
VOLTAGE - OUTPUT (MIN/FIXED)	Tracking
VOLTAGE - OUTPUT (MAX)	-
VOLTAGE - INPUT (MAX)	45V
SUPPLIER DEVICE PACKAGE	D2PAK-5
SERIES	-
PROTECTION FEATURES	Over Temperature, Reverse Polarity, Short Circuit
PACKAGING	Tape & Reel (TR)
PACKAGE / CASE	TO-263-6, D ² Pak (5 Leads + Tab), TO-263BA
PSRR	60dB (120Hz)
OUTPUT TYPE	Adjustable
OUTPUT CONFIGURATION	Positive
OTHER NAMES	CS8182YDPSR5G-ND CS8182YDPSR5GOSTR
OPERATING TEMPERATURE	-40°C ~ 125°C
NUMBER OF REGULATORS	1
MOUNTING TYPE	Surface Mount
MOISTURE SENSITIVITY LEVEL (MSL)	3 (168 Hours)
LEAD FREE STATUS / ROHS STATUS	Lead free / RoHS Compliant
DETAILED DESCRIPTION	Linear Voltage Regulator IC Positive Adjustable 1 Output 2.8 V ~ 45 V 200mA D2PAK-5
CURRENT - SUPPLY (MAX)	25mA
CURRENT - QUIESCENT (IQ)	55µA
CURRENT - OUTPUT	200mA
CONTROL FEATURES	Enable
BASE PART NUMBER	CS8182

Related Tags

AMI Semiconductor / ON Semiconductor CS8182YDPSR5G	CS8182YDPSR5G Distributor	CS8182YDPSR5G Supplier
CS8182YDPSR5G Price	CS8182YDPSR5G Pictures	CS8182YDPSR5G Image
CS8182YDPSR5G PDF Datasheet	CS8182YDPSR5G Download Datasheet	CS8182YDPSR5G Datasheet
CS8182YDPSR5G Stock	Buy CS8182YDPSR5G	Buy AMI Semiconductor / ON Semiconductor CS8182YDPSR5G
AMI Semiconductor / ON Semiconductor CS8182YDPSR5G	AMI Semiconductor / ON Semiconductor Supplier	AMI Semiconductor / ON Semiconductor Distributor
AMI Semiconductor / ON Semiconductor CS8182YDPSR5G	ON Semiconductor CS8182YDPSR5G	Aptina / ON Semiconductor CS8182YDPSR5G
Catalyst Semiconductor / ON Semiconductor CS8182YDPSR5G	PulseCore Semiconductor / ON Semiconductor CS8182YDPSR5G	Sanyo Semiconductor / ON Semiconductor CS8182YDPSR5G

Related Products

<p>CS8182YDPS5 Manufacturers: AMI Semiconductor / ON Semiconductor Description: IC REG LIN POS ADJ 200MA D2PAK-5 In stock: 6067 pcs RFQ</p>	<p>CS8183YDWF20G Manufacturers: AMI Semiconductor / ON Semiconductor Description: IC REG LINEAR POS ADJ 20SOIC In stock: 5277 pcs RFQ</p>
<p>CS8183YDWF20 Manufacturers: AMI Semiconductor / ON Semiconductor Description: IC REG LINEAR POS ADJ 20SOIC In stock: 3540 pcs RFQ</p>	<p>CS8190EDWF20 Manufacturers: AMI Semiconductor / ON Semiconductor Description: IC DRIVER 20SOIC In stock: 6397 pcs RFQ</p>
<p>CS8190EDWF20G Manufacturers: AMI Semiconductor / ON Semiconductor Description: IC DRIVER 20SOIC In stock: 5768 pcs RFQ</p>	<p>CS8182YDF8G Manufacturers: AMI Semiconductor / ON Semiconductor Description: IC REG LIN POS ADJ 200MA 8SOIC In stock: 6877 pcs RFQ</p>
<p>CS8183YDWF20 Manufacturers: AMI Semiconductor / ON Semiconductor Description: IC REG LINEAR POS ADJ 20SOIC In stock: 3216 pcs RFQ</p>	<p>CS8182YDPS5G Manufacturers: AMI Semiconductor / ON Semiconductor Description: IC REG LIN POS ADJ 200MA D2PAK-5 In stock: 5391 pcs RFQ</p>
<p>CS8183YDWF20G Manufacturers: AMI Semiconductor / ON Semiconductor Description: IC REG LINEAR POS ADJ 20SOIC In stock: 4563 pcs RFQ</p>	<p>CS8182YDFR8 Manufacturers: AMI Semiconductor / ON Semiconductor Description: IC REG LIN POS ADJ 200MA 8SOIC In stock: 120581 pcs RFQ</p>
<p>CS8182YDPSR5 Manufacturers: AMI Semiconductor / ON Semiconductor Description: IC REG LIN POS ADJ 200MA D2PAK-5 In stock: 6241 pcs RFQ</p>	<p>CS8182YDFR8G Manufacturers: AMI Semiconductor / ON Semiconductor Description: IC REG LIN POS ADJ 200MA 8SOIC In stock: 50433 pcs RFQ</p>