

**TOSHIBA**  
Leading Innovation >>>

Toshiba Semiconductor and Storage

## TC7SH32F,LJ(CT)

Part Number:	TC7SH32F,LJ(CT)
Manufacturer/Brand:	Toshiba Semiconductor and Storage
Product description:	IC GATE OR 1CH 2-INP SMV
Datasheets:	<a href="#">TC7SH32F,LJ(CT).pdf</a>
RoHS Status:	Lead free / RoHS Compliant
Stock Condition:	1261543 pcs stock
Ship From:	Hong Kong
Shipment Way:	DHL/Fedex/TNT/UPS/EMS

**REQUEST FOR QUOTATION**

### Storage

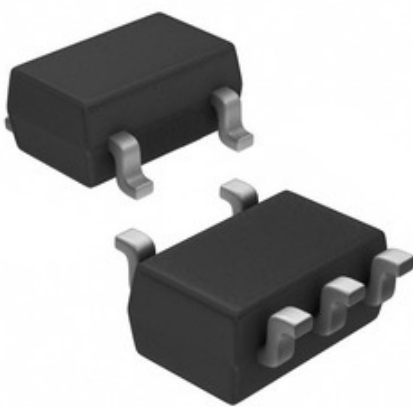


Image may be representation. See specifications for product details.

### Specifications of TC7SH32F,LJ(CT)

PART NUMBER	TC7SH32F,LJ(CT)
MANUFACTURER	Toshiba Semiconductor and Storage
DESCRIPTION	IC GATE OR 1CH 2-INP SMV
LEAD FREE STATUS / ROHS STATUS	Lead free / RoHS Compliant
QUANTITY AVAILABLE	1261543 pcs
DATA SHEET	<a href="#">TC7SH32F,LJ(CT).pdf</a>
VOLTAGE - SUPPLY	2 V ~ 5.5 V
SUPPLIER DEVICE PACKAGE	SMV
SERIES	TC7SH
PACKAGING	Tape & Reel (TR)
PACKAGE / CASE	SC-74A, SOT-753
OTHER NAMES	TC7SH32F,LJ TC7SH32F,LJ(CB) TC7SH32F,LJ(T) TC7SH32FLJ TC7SH32FLJ(CT) TC7SH32FLJ(CT-ND) TC7SH32FLJ(CTTR) TC7SH32FLJTR TC7SH32FLJTR-ND
OPERATING TEMPERATURE	-40°C ~ 85°C
NUMBER OF INPUTS	2
NUMBER OF CIRCUITS	1
MOUNTING TYPE	Surface Mount
MOISTURE SENSITIVITY LEVEL (MSL)	1 (Unlimited)
MAX PROPAGATION DELAY @ V, MAX CL	7.5ns @ 5V, 50pF
LOGIC TYPE	OR Gate
LOGIC LEVEL - LOW	0.5V
LOGIC LEVEL - HIGH	1.5V
LEAD FREE STATUS / ROHS STATUS	Lead free / RoHS Compliant
FEATURES	-
DETAILED DESCRIPTION	OR Gate IC 1 Channel SMV
CURRENT - QUIESCENT (MAX)	2µA
CURRENT - OUTPUT HIGH, LOW	8mA, 8mA
BASE PART NUMBER	7SH32

### Related Tags

Toshiba Semiconductor and Storage TC7SH32F,LJ(CT)	TC7SH32F,LJ(CT Distributor)	TC7SH32F,LJ(CT Supplier)
TC7SH32F,LJ(CT Price)	TC7SH32F,LJ(CT Pictures)	TC7SH32F,LJ(CT Image)
TC7SH32F,LJ(CT PDF Datasheet)	TC7SH32F,LJ(CT Download Datasheet)	TC7SH32F,LJ(CT Datasheet)
TC7SH32F,LJ(CT Stock)	Buy TC7SH32F,LJ(CT)	Buy Toshiba Semiconductor and Storage TC7SH32F,LJ(CT)
Toshiba Semiconductor and Storage TC7SH32F,LJ(CT)	Toshiba Semiconductor and Storage Supplier	Toshiba Semiconductor and Storage Distributor
Toshiba Semiconductor and Storage TC7SH32F,LJ(CT)	Toshiba TC7SH32F,LJ(CT)	

### Related Products

<p><b>TC7SH14FSTPL3</b> Manufacturers: Toshiba Semiconductor and Storage Description: IC INVERTER SCHMITT 1CH FSV In stock: 5060 pcs</p> <p><b>RFQ</b></p>	<p><b>TC7SH32FU,LJ(CT)</b> Manufacturers: Toshiba Semiconductor and Storage Description: IC GATE OR 1CH 2-INP USV In stock: 1556591 pcs</p> <p><b>RFQ</b></p>
<p><b>TC7SH34F,LJ(CT)</b> Manufacturers: Toshiba Semiconductor and Storage Description: IC BUFFER NON-INVERT 5.5V SMV In stock: 196069 pcs</p> <p><b>RFQ</b></p>	<p><b>TC7SH17FU,LJ(CT)</b> Manufacturers: Toshiba Semiconductor and Storage Description: IC BUFFER NON-INVERT 5.5V USV In stock: 1526522 pcs</p> <p><b>RFQ</b></p>
<p><b>TC7SH34FS(TPL3)</b> Manufacturers: Toshiba Semiconductor and Storage Description: IC BUFFER NON-INVERT 5.5V FSV In stock: 2885 pcs</p> <p><b>RFQ</b></p>	<p><b>TC7SH34FE,LM</b> Manufacturers: Toshiba Semiconductor and Storage Description: IC BUFFER NON-INVERT 5.5V ESV In stock: 5972 pcs</p> <p><b>RFQ</b></p>
<p><b>TC7SH32FS,L3F</b> Manufacturers: Toshiba Semiconductor and Storage Description: IC GATE OR 1CH 2-INP FSV In stock: 188809 pcs</p> <p><b>RFQ</b></p>	<p><b>TC7SH32FE,LM</b> Manufacturers: Toshiba Semiconductor and Storage Description: IC GATE OR 1CH 2-INP ESV In stock: 221227 pcs</p> <p><b>RFQ</b></p>
<p><b>TC7SH17F,LJ</b> Manufacturers: Toshiba Semiconductor and Storage Description: IC BUFFER NON-INVERT 5.5V SMV In stock: 195671 pcs</p> <p><b>RFQ</b></p>	<p><b>TC7SH14FU,LJ(CT)</b> Manufacturers: Toshiba Semiconductor and Storage Description: IC INVERTER SCHMITT 1CH USV In stock: 264417 pcs</p> <p><b>RFQ</b></p>
<p><b>TC7SH17F,LJ(CT)</b> Manufacturers: Toshiba Semiconductor and Storage Description: IC BUFFER NON-INVERT 5.5V SMV In stock: 1375029 pcs</p> <p><b>RFQ</b></p>	<p><b>TC7SH14F,LJ(CT)</b> Manufacturers: Toshiba Semiconductor and Storage Description: IC INVERTER SCHMITT 1CH SMV In stock: 222051 pcs</p> <p><b>RFQ</b></p>