

ON Semiconductor AMI Semiconductor / ON

## NCP803SN463T1G

Part Number:	NCP803SN463T1G
Manufacturer/Brand:	AMI Semiconductor / ON Semiconductor
Product description:	IC MPU RESET MONITOR 4.63V SOT23
Datasheets:	<a href="#">NCP803SN463T1G.pdf</a>
RoHS Status:	Lead free / RoHS Compliant
Stock Condition:	186079 pcs stock
Ship From:	Hong Kong
Shipment Way:	DHL/Fedex/TNT/UPS/EMS

**REQUEST FOR QUOTATION**

### Semiconductor

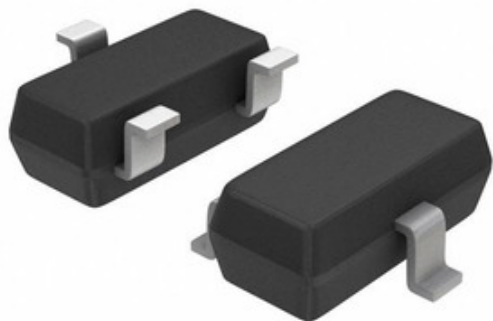


Image may be representation. See specifications for product details.

### Specifications of NCP803SN463T1G

PART NUMBER	NCP803SN463T1G
MANUFACTURER	AMI Semiconductor / ON Semiconductor
DESCRIPTION	IC MPU RESET MONITOR 4.63V SOT23
LEAD FREE STATUS / ROHS STATUS	Lead free / RoHS Compliant
QUANTITY AVAILABLE	186079 pcs
DATA SHEET	<a href="#">NCP803SN463T1G.pdf</a>
VOLTAGE - THRESHOLD	4.63V
TYPE	Simple Reset/Power-On Reset
SUPPLIER DEVICE PACKAGE	SOT-23-3 (TO-236)
SERIES	-
RESET TIMEOUT	140 ms Minimum
RESET	Active Low
PACKAGING	Cut Tape (CT)
PACKAGE / CASE	TO-236-3, SC-59, SOT-23-3
OUTPUT	Open Drain or Open Collector
OTHER NAMES	NCP803SN463T1GOSCT
OPERATING TEMPERATURE	-40°C ~ 105°C (TJ)
NUMBER OF VOLTAGES MONITORED	1
MOUNTING TYPE	Surface Mount
MOISTURE SENSITIVITY LEVEL (MSL)	1 (Unlimited)
LEAD FREE STATUS / ROHS STATUS	Lead free / RoHS Compliant
DETAILED DESCRIPTION	Supervisor Open Drain or Open Collector 1 Channel SOT-23-3 (TO-236)
BASE PART NUMBER	NCP803

### Related Tags

AMI Semiconductor / ON Semiconductor NCP803SN463T1G	NCP803SN463T1G Distributor	NCP803SN463T1G Supplier
NCP803SN463T1G Price	NCP803SN463T1G Pictures	NCP803SN463T1G Image
NCP803SN463T1G PDF Datasheet	NCP803SN463T1G Download Datasheet	NCP803SN463T1G Datasheet
NCP803SN463T1G Stock	Buy NCP803SN463T1G	Buy AMI Semiconductor / ON Semiconductor NCP803SN463T1G
AMI Semiconductor / ON Semiconductor NCP803SN463T1G	AMI Semiconductor / ON Semiconductor Supplier	AMI Semiconductor / ON Semiconductor Distributor
AMI Semiconductor / ON Semiconductor NCP803SN463T1G	ON Semiconductor NCP803SN463T1G	Aptina / ON Semiconductor NCP803SN463T1G
Catalyst Semiconductor / ON Semiconductor NCP803SN463T1G	PulseCore Semiconductor / ON Semiconductor NCP803SN463T1G	Sanyo Semiconductor / ON Semiconductor NCP803SN463T1G

### Related Products

<p><b>NCP803SN463T1</b> Manufacturers: AMI Semiconductor / ON Semiconductor Description: IC MPU RESET MONITOR 4.63V SOT23 In stock: 5431 pcs <b>RFQ</b></p>	<p><b>NCP803SN400T1G</b> Manufacturers: AMI Semiconductor / ON Semiconductor Description: IC MPU RESET MONITOR 4V SOT-23-3 In stock: 140220 pcs <b>RFQ</b></p>
<p><b>NCP81005MNTWG</b> Manufacturers: AMI Semiconductor / ON Semiconductor Description: IC CTRLR DUAL OUTPUT QFN In stock: 6677 pcs <b>RFQ</b></p>	<p><b>NCP81022MNTXG</b> Manufacturers: AMI Semiconductor / ON Semiconductor Description: IC CONTROLLER AMD VR QFN In stock: 37217 pcs <b>RFQ</b></p>
<p><b>NCP81031MNTWG</b> Manufacturers: AMI Semiconductor / ON Semiconductor Description: IC REG CTRLR BUCK 16QFN In stock: 4389 pcs <b>RFQ</b></p>	<p><b>NCP803SN463D1T1G</b> Manufacturers: AMI Semiconductor / ON Semiconductor Description: IC MPU RESET MON 4.6 3V SOT23-3 In stock: 476504 pcs <b>RFQ</b></p>
<p><b>NCP81018BMNR2G</b> Manufacturers: AMI Semiconductor / ON Semiconductor Description: IC CONTROLLER 3+2 SMD In stock: 4513 pcs <b>RFQ</b></p>	<p><b>NCP81018AMNR2G</b> Manufacturers: AMI Semiconductor / ON Semiconductor Description: IC CONTROLLER 3+2 SMD In stock: 6363 pcs <b>RFQ</b></p>
<p><b>NCP803SN438T1G</b> Manufacturers: AMI Semiconductor / ON Semiconductor Description: IC MPU RESET MONITOR 4.38V SOT23 In stock: 159649 pcs <b>RFQ</b></p>	<p><b>NCP803SN438T1</b> Manufacturers: AMI Semiconductor / ON Semiconductor Description: IC MPU RESET MONITOR 4.38V SOT23 In stock: 4534 pcs <b>RFQ</b></p>
<p><b>NCP803SN308T1G</b> Manufacturers: AMI Semiconductor / ON Semiconductor Description: IC MPU RESET MONITOR 3.08V SOT23 In stock: 378740 pcs <b>RFQ</b></p>	<p><b>NCP81038AMNTWG</b> Manufacturers: AMI Semiconductor / ON Semiconductor Description: IC REG CTRLR BUCK PWM 16-QFN In stock: 4248 pcs <b>RFQ</b></p>